



*Aiding motion in every industry*

# CHAINS FOR GENERAL ENGINEERING



**ENGINEERING  
CLASS CHAINS**

**TIDC INDIA**

**THE COMPLETE  
CHAIN COMPANY**





### **TIDC India – The complete chain Company**

Diamond India chains are designed and manufactured by TIDC India, a part of the prestigious Murugappa Group, one of the most trusted and respected business groups in India. A Group that is renowned for its belief in ethical business practices, innovative processes and people development.

Over six decades, TIDC has built chains for virtually every sector of industry. From tiller chains, agricultural chains, leaf chains and conveyor chains to industrial power drive chains, motorcycle drive chains and engine mechanism chains, our expertise is moving men and material across every sphere of life. And today, we possess the capability to meet any requirements in chains, anywhere in the world.

### **Our Strength : R & D**

At TIDC, we owe our success to continuous improvement. Innovating products that suit customer needs better, makes us to constantly improve. Every choice with regards to size, material or method is in direct response to the needs of application engineers in the industries we serve.



TIDC engineers use Auto CAD, Solid works and Finite Element Analysis for cutting edge solution in the design of the chains, and the manufacturing technology process is plotted out with equal care. The resulting products are comprehensively tested at our labs, before they eventually find their way to a Diamond Customer.

### **A Trusted Brand in Conveyor Chains**

The company has enormous strengths in conveyor chains, making chains for various applications in different Industries.

### **TIDC Means chains with more strength**

Strict and complete adherence to consistent quality and regular technology up gradation have ensured TIDC chains exceed all laid down parameters

- High strength – higher breaking load. TIDC chains are tested for higher breaking load values than the international standard, endowing them with extra strength you can count on.
- Tough construction – to withstand shock load conditions common in rugged applications. TIDC has the edge in raw materials, design as well as manufacturing processes that enables us to build chains that are more rugged.
- High tensile strength – certain applications call for chains with better tensile strength, and TIDC works this feature into their products at every stage of production.
- Attachment – regular and made to order attachments are offered based on client needs.

### **Quality, the TIES THAT Bind Everything**

Total Quality Management is a governing principle at TIDC India and we have our own quality system in place called 'TIES' (T.I. Excellence System)

encompassing all aspects of functioning. Beginning with the design phase, purchase and inspection of raw materials, vendor management, work instructions and going on to cover all processes in manufacturing, packing and inspections before delivery.

TIES also provides for stringent procedures when it comes to traceability of products and reviews of customer feedback.

The TIES system functions by nurturing quality as an integral part in the entire value chain, and is now completely internalized by the company.

### **The Best Certificates are Those that comes from our clients**

We are one of the world's few companies to be certified for API 7F specifications by the American petroleum Institute for oil field chains.

Our manufacturing processes right from product design to testing of finished chains conform to ISO 9000:2000 standards and are certified by RWTUV of Germany. Our Motorcycle Engine Mechanism Chain and Fine Blanking Divisions are certified to TS 16949 standards by underwriters Laboratories, USA.

But what gives us the most pride is, the approval and repeat orders that comes to us from our clients all over India & across the world.

### **Product Leadership**

Customers turn to TIDC for products that are designed for high performance, expanded equipment life and enhanced productivity. If you need chains that operate reliably in challenging environments, TIDC is the right source.

We apply our decades of research, engineering, manufacturing and service knowhow for every application. Because of our own performance

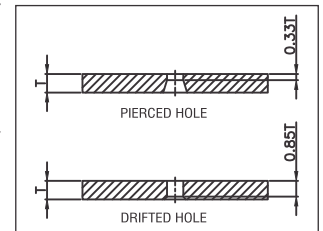
advantages, large OEMs turn to TIDC for products and support. This same OEM quality is offered to our after market products. That is why you will find our chains used in every tough applications.

TIDC engineers are committed to understanding your process and solve unique application problems. We work with you to optimize chain performance in the above stated products.

We use this spirit of collaboration to develop customized power transmission solutions.

### **Great Fatigue and Tensile Strength**

The plates in each and every TIDC chain undergo piercing operation to extremely accurate specifications. Followed by Shaving or Drifting to increase bearing area, guaranteeing greater dynamic strength and fatigue life.



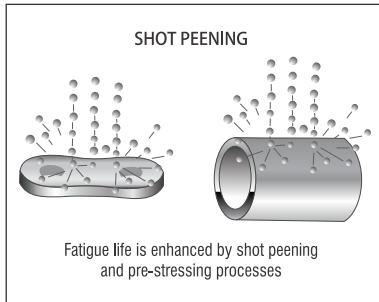
### **Longer Wear Life**

Roundness of the bushes and heat treatment of pins and bushes impact wear life. At TIDC bushes and pins are produced using numerically controlled machines which produces them with greater accuracy.

### **Heat Treatment**



Heat treatment is our core competency at TIDC. Our team has rich experience in heat treatment to maximize strength and life in every chain elements: pins, bushing, rollers and link plates. We deploy our specialist skills in continuous hardening operations for martensitic heat treatment. Under a completely automated atmosphere we work with high, medium and low carbon steels, alloy steels, austenitic and martensitic stainless steels etc. Other treatments we offer based on customer specifications are:



**Shot peening for Maximum Load Capability/Shot Peening**

Critical applications call for chains with high working load capability, plates and rollers are shot peened after heat treatment thereby increasing fatigue life. It is done by constantly bombarding the component with hard metal pellets at high speeds.

**Corrosion Resistance**

TIDC offers plating options, for corrosion resistance and enhanced product life – chromised pins have been proven to improve performance dramatically.

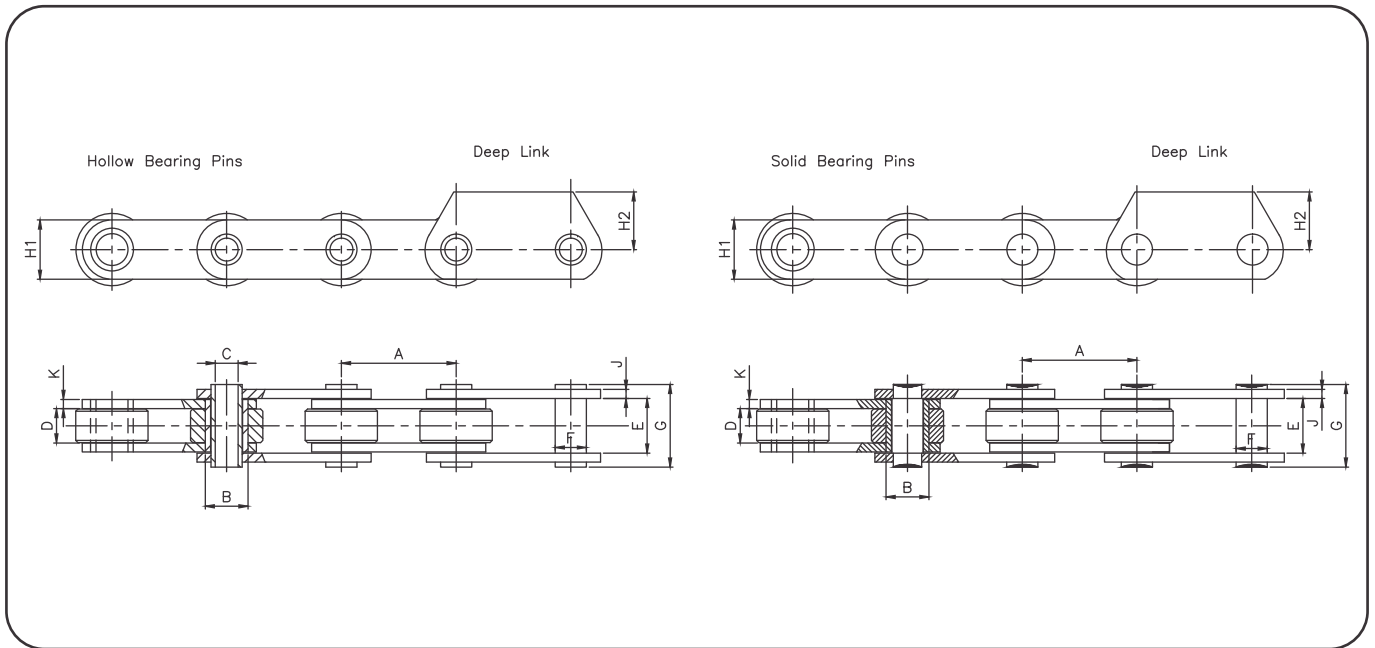


**Testing**

TIDC has immense capabilities for testing to validate the quality of their products. Every batch goes through stringent testing protocol, which covers fatigue tests, corrosion tests and much more. TIDC conveyor chains are built to exceed international standards, and this performance level is meticulously tested before the products reach you.



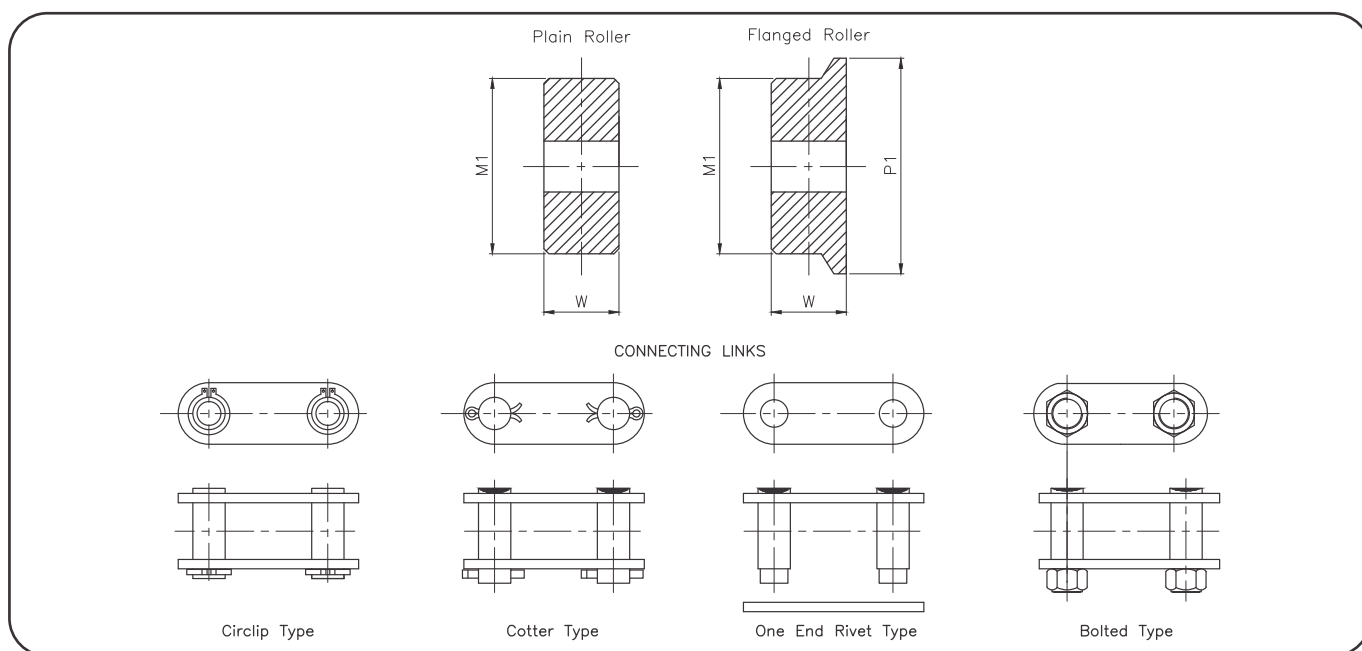
## BRITISH STANDARD CONVEYOR CHAINS



| Chain Ref                 | Technical Details (mm) |       |          |                             |      |      |         |            |              |        |               |                 |
|---------------------------|------------------------|-------|----------|-----------------------------|------|------|---------|------------|--------------|--------|---------------|-----------------|
| Breaking Load             | Pitch                  | Pitch | Bush Dia | Hollow Bearing Pin Bore Dia | WIP  | WOP  | Pin Dia | Pin Length | Plate height | Height | O/P Thickness | I/P T thickness |
| Lbf                       | mm                     | mm    |          |                             |      |      |         |            |              |        |               |                 |
| MIN                       | MIN                    | MAX   | MIN      | MIN                         | MIN  | MIN  | MAX     | MAX        | MAX          |        |               |                 |
| <b>Hollow Bearing Pin</b> |                        |       |          |                             |      |      |         |            |              |        |               |                 |
|                           | A                      | A     | B        | C                           | D    | E    | F       | G          | H1           | H2     | J             | K               |
| 4500                      | 38.1                   | 76.2  | 12.1     | 6.6                         | 12.7 | 17.8 | 9.5     | 24.6       | 19.1         | -      | 1.8           | 2.3             |
| 6000                      | 38.1                   | 152.4 | 18.0     | 10.1                        | 15.0 | 25.4 | 14      | 36.5       | 25.4         | 26.0   | 3.8           | 3.8             |
| 12000                     | 50.8                   | 228.6 | 23.6     | 13.2                        | 19.0 | 32.5 | 19      | 44         | 38.1         | 32.0   | 3.8           | 5.1             |
| 24000                     | 88.9                   | 304.8 | 33.2     | 20.1                        | 25.4 | 43.0 | 26.9    | 57         | 51.0         | 45.0   | 5.1           | 7.1             |
| 36000                     | 127.0                  | 457.2 | 38.1     | 23.1                        | 38.1 | 59.0 | 31.8    | 79.5       | 61.0         | -      | 7.6           | 8.9             |

| <b>Solid Bearing Pin</b> |       |       |      |   |      |      |      |      |      |      |      |      |
|--------------------------|-------|-------|------|---|------|------|------|------|------|------|------|------|
|                          | A     | A     | B    | C | D    | E    | F    | G    | H1   | H2   | J    | K    |
| 3000                     | 25.4  | 114.3 | 8.6  | - | 11.7 | 16   | 5.7  | 21.8 | 18.0 | 16.0 | 1.8  | 1.8  |
| 7500                     | 38.1  | 152.4 | 18.0 | - | 15.0 | 25.4 | 14.0 | 38.0 | 25.4 | 26.0 | 3.8  | 3.8  |
| 15000                    | 50.8  | 228.6 | 23.6 | - | 19.0 | 32.5 | 19.0 | 46.0 | 38.1 | 32.0 | 3.8  | 5.1  |
| 30000                    | 88.9  | 304.8 | 33.2 | - | 25.4 | 43.0 | 26.9 | 60.0 | 51.0 | 45.0 | 5.1  | 7.1  |
| 45000                    | 127.0 | 457.2 | 38.1 | - | 38.1 | 59.0 | 31.8 | 82.0 | 61.0 | -    | 7.6  | 8.9  |
| 60000                    | 152.4 | 457.2 | 38.1 | - | 38.1 | 59.0 | 23.0 | 80.0 | 61.0 | -    | 7.6  | 8.9  |
| 90000                    | 152.4 | 609.6 | 38.1 | - | 38.1 | 66.3 | 29.4 | 94.0 | 63.5 | -    | 10.0 | 13.0 |

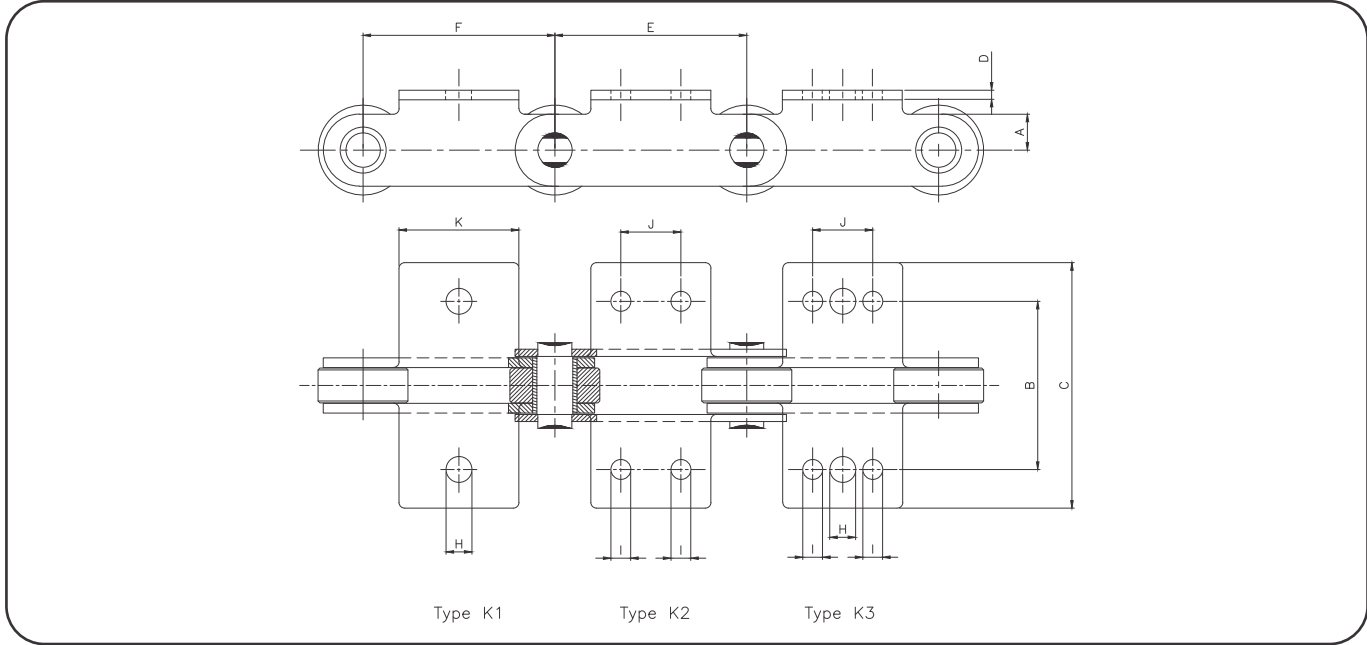
## ROLLERS



| Rollers                       |           | Pitch mm       | Tread Dia | Roller Width | Pitch mm         | Dia  | Tread Dia | Flange Width |
|-------------------------------|-----------|----------------|-----------|--------------|------------------|------|-----------|--------------|
| Hollow Pin                    | Solid Pin |                |           |              |                  |      |           |              |
| Lbf                           | Lbf       | MIN            |           |              | MIN              |      |           |              |
| Standard roller breaking load |           | Standard Plain |           |              | Standard flanged |      |           |              |
| -                             | 3000      | 25.4           | 12.1      | 11.4         | -                | -    | -         | -            |
| 6000                          | 7500      | 50.8           | 31.8      | 14.0         | 63.5             | 31.8 | 41.3      | 14.0         |
| 12000                         | 15000     | 76.2           | 47.6      | 17.8         | 88.9             | 47.6 | 60.3      | 17.8         |
| 24000                         | 30000     | 101.6          | 66.7      | 24.0         | 114.3            | 66.7 | 85.7      | 24.0         |
| 36000                         | 45000     | 127.0          | 88.9      | 36.8         | 152.4            | 88.9 | 114.3     | 36.8         |
| -                             | 60000     | 127.0          | 88.9      | 36.8         | 152.4            | 88.9 | 114.3     | 36.8         |
| -                             | 90000     | 152.4          | 88.9      | 36.8         | 165.1            | 88.9 | 114.3     | 36.8         |

| Large Roller |       | Plain |       |      | Flanged |       |       |      |
|--------------|-------|-------|-------|------|---------|-------|-------|------|
| -            | 3000  | 38.1  | 25.4  | 11.4 | -       | -     | -     |      |
| 4500         | -     | 38.1  | 25.4  | 11.4 | -       | -     | -     |      |
| 36000        | 45000 | 203.2 | 127.0 | 36.8 | 228.6   | 127.0 | 152.4 | 36.8 |
| -            | 60000 | 203.2 | 127.0 | 36.8 | 228.6   | 127.0 | 152.4 | 36.8 |
| -            | 90000 | 203.2 | 127.0 | 36.8 | 228.6   | 127.0 | 152.4 | 36.8 |

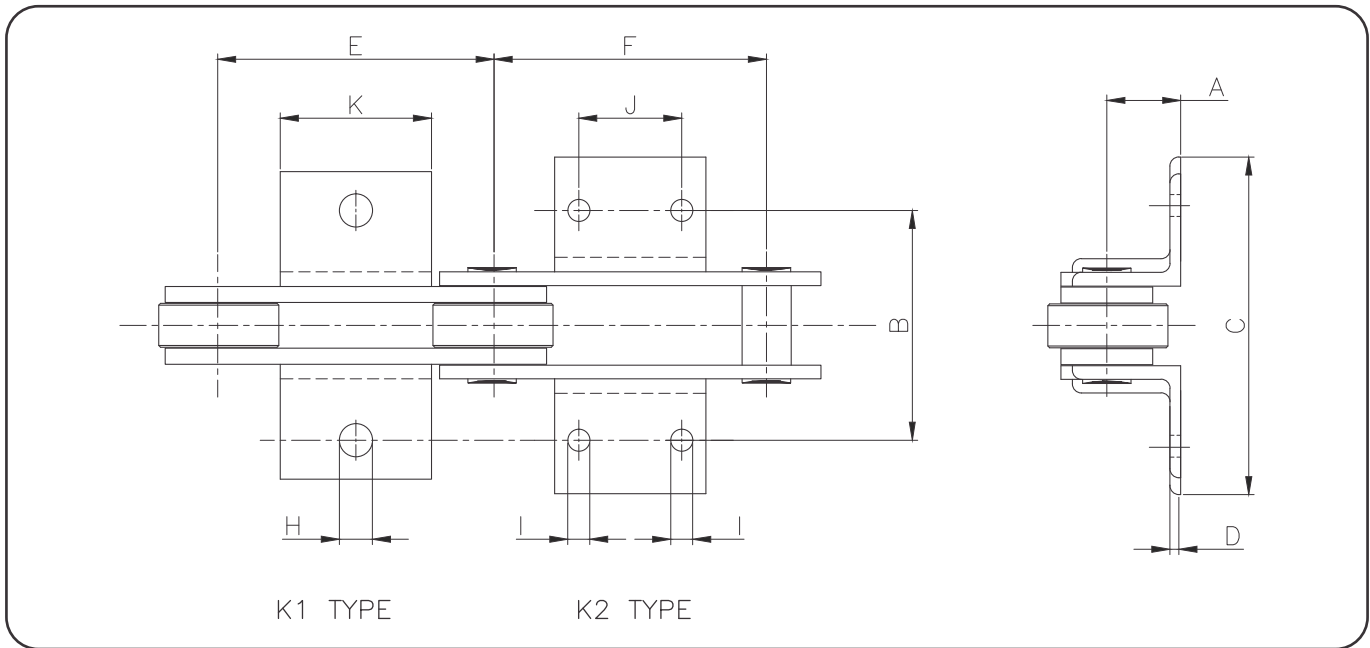
## BS K ATTACHMENTS (INTEGRAL)



| Technical Details (mm)                              |                 |                  |                                   |                      |                 |                                |                                |                 |                |                       |                 |
|---|-----------------|------------------|-----------------------------------|----------------------|-----------------|--------------------------------|--------------------------------|-----------------|----------------|-----------------------|-----------------|
| Breaking Load                                       | Platform Height | Transverse Pitch | Width over Attachment inner/outer | Attachment Thickness | Attachment Type | Attachment Minimum outer Pitch | Attachment Minimum inner Pitch | Centre hole dia | Outer hole dia | Attachment hole pitch | Platform length |
| Lbf   |                 |                  |                                   |                      |                 |                                |                                |                 |                |                       |                 |
| <b>Conveyor chain - BS K attachments (integral)</b> |                 |                  |                                   |                      |                 |                                |                                |                 |                |                       |                 |
|   | A               | B                | C                                 | D                    |                 | E                              | F                              | H               | I              | J                     | K               |
| 3000  | 16,5            | 44,5             | 66/70                             | 1,8/1,8              | K1              | 38,1                           | 38,1                           | 9,2             | -              | -                     | 19,0            |
|   |                 |                  |                                   |                      | K3              | 50,8                           | 50,8                           | 9,2             | 7,4            | 25,4                  | 44,5            |
|   |                 |                  |                                   |                      | K3              | 76,2                           | 76,2                           | 9,2             | 7,4            | 25,4                  | 44,5            |
|   |                 |                  |                                   |                      | K3              | 101,6                          | 101,6                          | 9,2             | 7,4            | 25,4                  | 70,0            |
| 6000/7500   | 19              | 76,2             | 106/115                           | 3,8/3,8              | K3              | 76,2                           | 76,2                           | 10,5            | 9,2            | 22,2                  | 43,0            |
|   |                 |                  |                                   |                      | K3              | 101,6                          | 101,6                          | 10,5            | 9,2            | 31,8                  | 63,5            |
|   |                 |                  |                                   |                      | K3              | 127                            | 127                            | 10,5            | 9,2            | 57,2                  | 89,0            |
|   |                 |                  |                                   |                      | K3              | 152,4                          | 152,4                          | 10,5            | 9,2            | 57,2                  | 114,5           |
| 12000/15000   | 31,8            | 89,0             | 130/136                           | 5,1/3,8              | K3              | 76,2                           | 76,2                           | 13,7            | 10,5           | 31,8                  | 63,5            |
|   |                 |                  |                                   |                      | K3              | 101,6                          | 101,6                          | 13,7            | 10,5           | 31,8                  | 63,5            |
|   |                 |                  |                                   |                      | K3              | 152,4                          | 152,4                          | 13,7            | 10,5           | 57,2                  | 114,5           |
| 24000/30000   | 38              | 108              | 146/157                           | 7,1/5,1              | K1              | 101,6                          | 101,6                          | 15,3            | -              | -                     | 63,5            |
|   |                 |                  |                                   |                      | K2              | 101,6                          | 101,6                          | -               | 12,2           | 31,8                  | 63,5            |
|   |                 |                  |                                   |                      | K3              | 152,4                          | 152,4                          | 15,3            | 12,2           | 57,2                  | 114,5           |
| 36000/45000   | 50,8            | 146              | 198/198                           | 8,9/7,6              | K2              | 152,4                          | 152,4                          | -               | 13,7           | 31,8                  | 74,0            |
|   |                 |                  |                                   |                      | K2              | 203,2                          | 203,2                          | -               | 13,7           | 88,9                  | 125,0           |

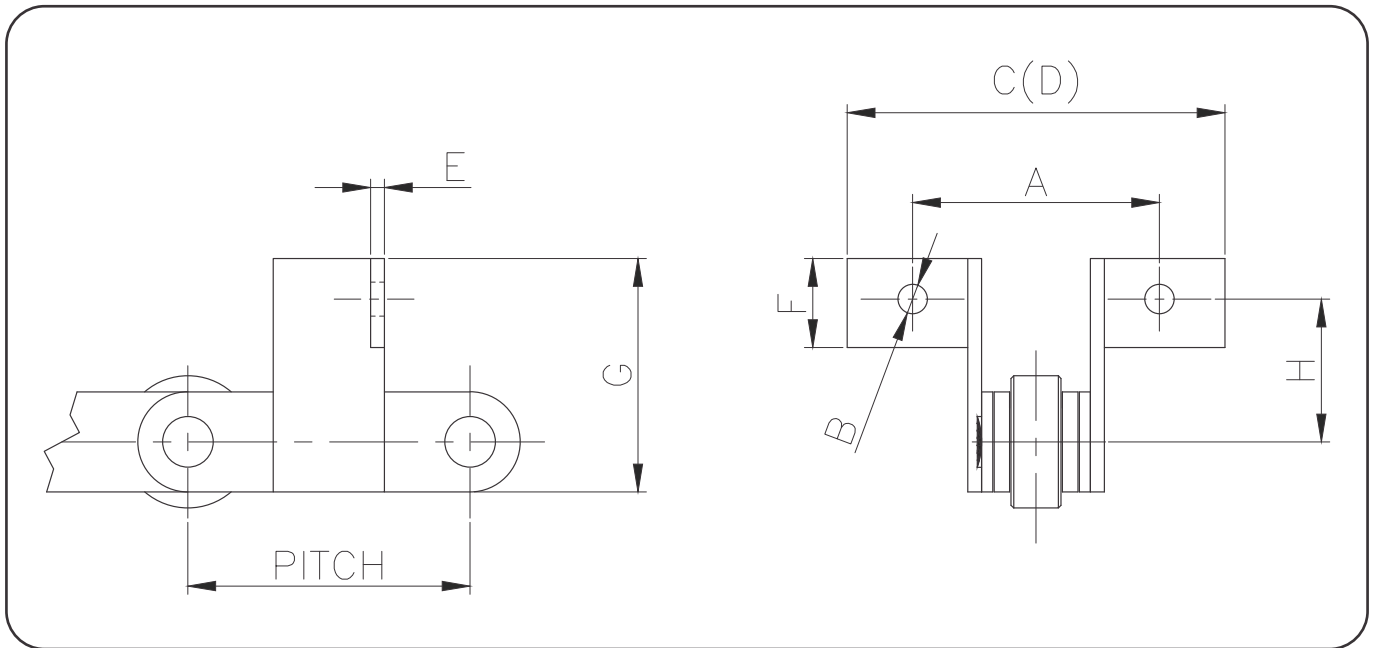


## BS K ATTACHMENTS (WELDED)



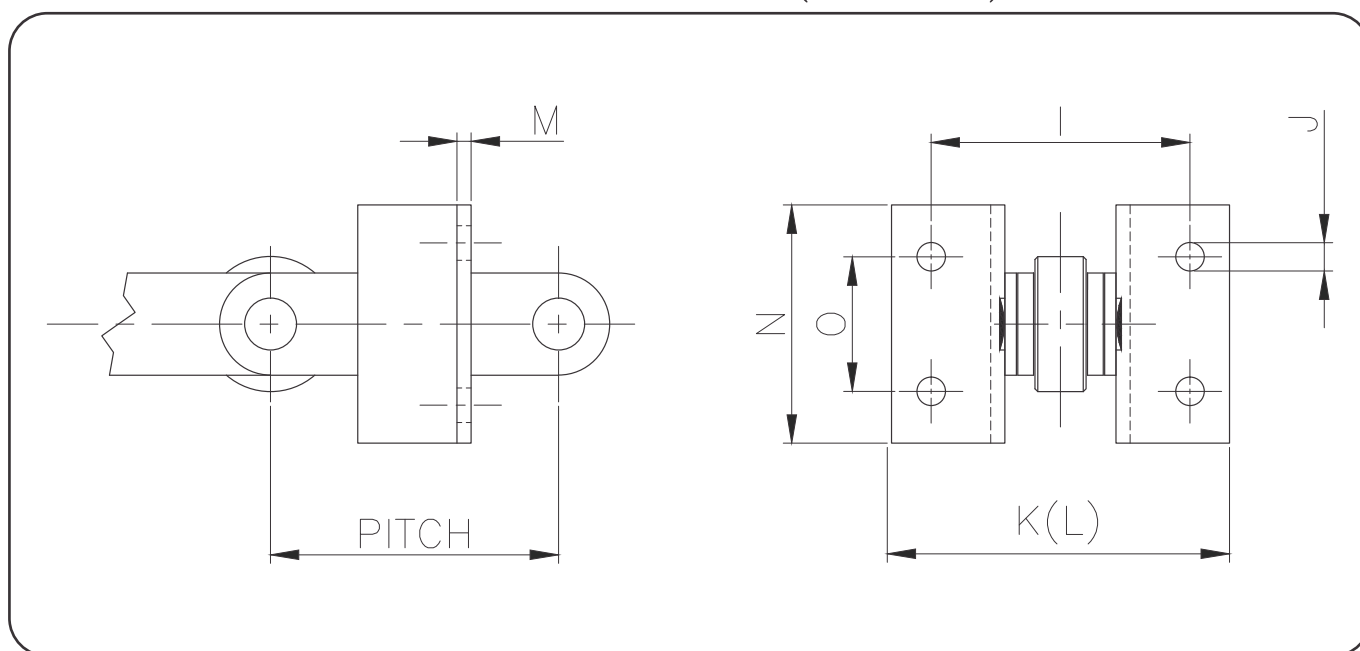
| Technical Details (mm)                     |                 |                  |                                   |                      |                 |                                |                                |                 |                |                       |                 |
|--|-----------------|------------------|-----------------------------------|----------------------|-----------------|--------------------------------|--------------------------------|-----------------|----------------|-----------------------|-----------------|
| Breaking Load                              | Platform Height | Transverse Pitch | Width over Attachment inner/outer | Attachment Thickness | Attachment Type | Attachment Minimum outer Pitch | Attachment Minimum inner Pitch | Centre hole dia | Outer hole dia | Attachment hole pitch | Platform length |
| Lbf  |                 |                  |                                   |                      |                 |                                |                                |                 |                |                       |                 |
| Conveyor chain - BS K attachments (welded) |                 |                  |                                   |                      |                 |                                |                                |                 |                |                       |                 |
|  | A               | B                | C                                 | D                    |                 | E                              | F                              | H               | I              | J                     | K               |
| 3000                                       | 16.5            | 44.5             | 68/72                             | 3.0                  | K1              | 38.1                           | 50.8                           | 8.2             | -              | -                     | 19.0            |
|  |                 |                  |                                   |                      | K1              | 50.8                           | 63.5                           | 8.2             | -              | -                     | 38.0            |
|  |                 |                  |                                   |                      | K2              | 50.8                           | 63.5                           | -               | 7.4            | 22.2                  | 38.0            |
|  |                 |                  |                                   |                      | K2              | 76.2                           | 76.2                           | -               | 7.4            | 25.4                  | 44.5            |
| 6000/7500                                  | 19              | 76.2             | 106/116                           | 4.0                  | K1              | 50.8                           | 63.5                           | 10.6            | -              | -                     | 19.0            |
|  |                 |                  |                                   |                      | K1              | 63.5                           | 76.2                           | 10.6            | -              | -                     | 28.0            |
|  |                 |                  |                                   |                      | K1              | 88.9                           | 101.6                          | 10.6            | -              | -                     | 56.0            |
|  |                 |                  |                                   |                      | K2              | 88.9                           | 101.6                          | -               | 9.2            | 31.8                  | 56.0            |
|  |                 |                  |                                   |                      | K2              | 114.3                          | 127.0                          | -               | 9.2            | 57.2                  | 84.0            |
|  |                 |                  |                                   |                      | K2              | 152.4                          | 177.8                          | -               | 10.5           | 88.9                  | 127.0           |
| 12000/15000                                | 31.8            | 88.9             | 122/133                           | 5                    | K1              | 76.2                           | 88.9                           | 13.7            | -              | -                     | 35.0            |
|  |                 |                  |                                   |                      | K1              | 88.9                           | 101.6                          | 13.7            | -              | -                     | 56.0            |
|  |                 |                  |                                   |                      | K2              | 88.9                           | 101.6                          | -               | 10.5           | 31.8                  | 56.0            |
|  |                 |                  |                                   |                      | K2              | 114.3                          | 152.4                          | -               | 10.5           | 57.2                  | 84.0            |
|  |                 |                  |                                   |                      | K2              | 152.4                          | 177.8                          | -               | 10.5           | 88.9                  | 127.0           |
|  |                 |                  |                                   |                      | K2              | 203.2                          | 203.2                          | -               | 12.2           | 133.4                 | 168.0           |
| 24000/30000                                | 38              | 108              | 146/159                           | 6                    | K1              | 127.0                          | 127.0                          | 15.3            | -              | -                     | 56.0            |
|  |                 |                  |                                   |                      | K2              | 127.0                          | 127.0                          | -               | 12.2           | 31.8                  | 56.0            |
|  |                 |                  |                                   |                      | K2              | 152.4                          | 152.4                          | -               | 12.2           | 57.2                  | 84.0            |
|  |                 |                  |                                   |                      | K2              | 177.8                          | 177.8                          | -               | 12.2           | 69.9                  | 108.0           |
|  |                 |                  |                                   |                      | K2              | 203.2                          | 203.2                          | -               | 12.2           | 88.9                  | 127.0           |
|  |                 |                  |                                   |                      | K2              | 228.6                          | 228.6                          | -               | 12.2           | 133.4                 | 168.0           |
| 36000/45000/60000                          | 50.8            | 146              | 202/200                           | 8                    | K1              | 152.4                          | 152.4                          | 16.9            | -              | -                     | 70.0            |
|  |                 |                  |                                   |                      | K2              | 152.4                          | 152.4                          | -               | 13.7           | 38.1                  | 70.0            |
|  |                 |                  |                                   |                      | K2              | 203.2                          | 203.2                          | -               | 13.7           | 76.2                  | 112.0           |
|  |                 |                  |                                   |                      | K2              | 228.6                          | 228.6                          | -               | 13.7           | 88.9                  | 152.0           |
|  |                 |                  |                                   |                      | K2              | 304.8                          | 304.8                          | -               | 13.7           | 165.1                 | 229.0           |
|  |                 |                  |                                   |                      | K2              | 304.8                          | 304.8                          | -               | 19.7           | 165.1                 | 229.0           |
| 90000                                      | 57              | 171.5            | 229/252                           | 10                   | K1              | 228.6                          | 228.6                          | 19.7            | -              | -                     | 89.0            |
|  |                 |                  |                                   |                      | K2              | 228.6                          | 228.6                          | -               | 19.7           | 44.5                  | 89.0            |
|  |                 |                  |                                   |                      | K2              | 228.6                          | 228.6                          | -               | 19.7           | 88.9                  | 152.0           |
|  |                 |                  |                                   |                      | K2              | 304.8                          | 304.8                          | -               | 19.7           | 165.1                 | 229.0           |

## BS F1 ATTACHMENTS (WELDED)



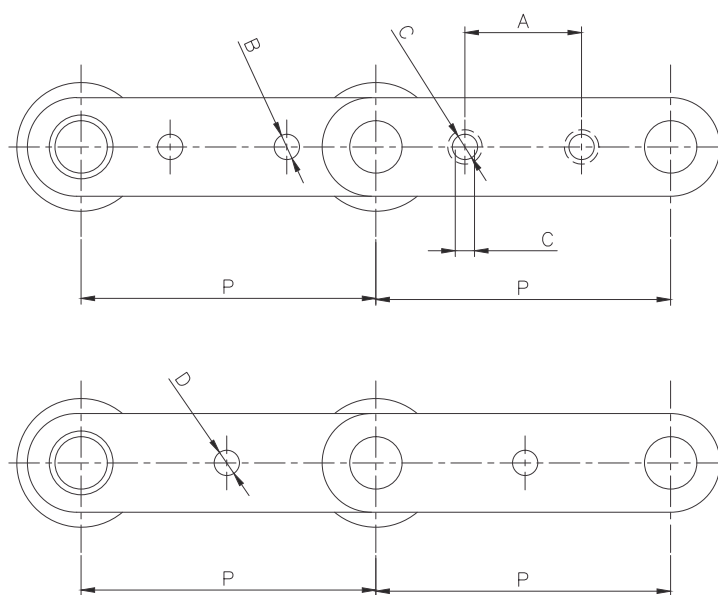
| Technical Details (mm)                     |                   |                   |                  |                      |                                   |                                   |                      |                        |                            |  |
|--|-------------------|-------------------|------------------|----------------------|-----------------------------------|-----------------------------------|----------------------|------------------------|----------------------------|--|
| Breaking Load                              | Pitch inner plate | Pitch outer plate | Transverse Pitch | Attachment hole size | Width over Attachment outer plate | Width over Attachment inner plate | Attachment Thickness | Attachment Face height | Total height of attachment | Attachment hole distance from chain centreline |
| Lbf  | MIN               | MIN               |                  |                      |                                   |                                   |                      |                        |                            |  |
| Conveyor chain -BS F1 attachments (welded) |                   |                   |                  |                      |                                   |                                   |                      |                        |                            |  |
|  |                   |                   | A                | B                    | C(Max)                            | D(Max)                            | E                    | F                      | G                          | H  |
| 3000                                       | 50.8              | 38.1              | 44.5             | 7.4                  | 72.0                              | 68.0                              | 3.0                  | 19.0                   | 44.5                       | 26.0   |
| 6000/7500                                  | 69.9              | 57.2              | 76.2             | 9.2                  | 116.0                             | 106.0                             | 4.0                  | 25.4                   | 56.0                       | 32.4   |
| 12000/15000                                | 101.6             | 82.6              | 88.9             | 10.5                 | 133.0                             | 122.0                             | 5.0                  | 31.8                   | 84.0                       | 51.4   |
| 24000/30000                                | 139.7             | 114.3             | 108.0            | 12.2                 | 159.0                             | 146.0                             | 6.0                  | 44.5                   | 108.0                      | 63.5   |
| 36000/45000                                | 165.1             | 133.4             | 146.0            | 13.7                 | 200.0                             | 202.0                             | 8.0                  | 63.5                   | 152.0                      | 90.0   |
| 60000                                      | 165.1             | 133.4             | 146.0            | 13.7                 | 200.0                             | 202.0                             | 8.0                  | 63.5                   | 152.0                      | 90.0   |
| 90000                                      | 190.5             | 152.4             | 171.5            | 19.7                 | 252.0                             | 229.0                             | 10.0                 | 63.5                   | 152.0                      | 88.9   |

## BS F2 ATTACHMENTS (WELDED)



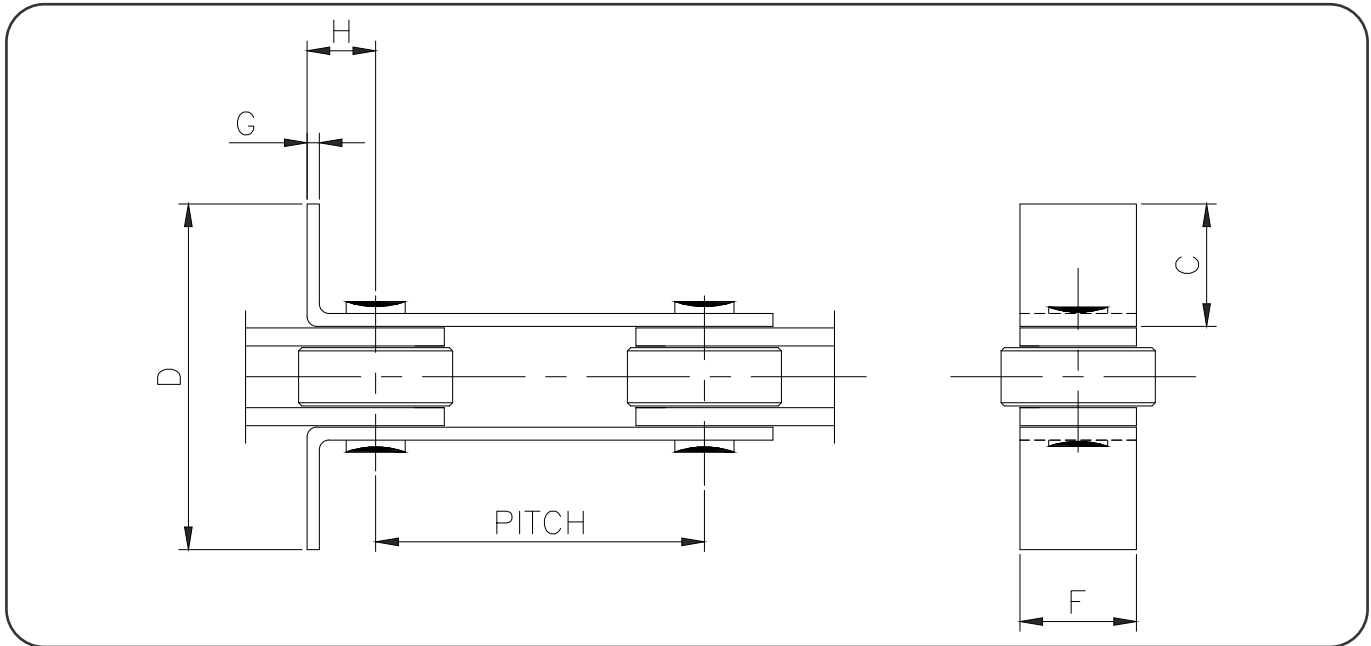
| Technical Details (mm)                     |                   |                   |                  |                      |                                   |                                   |                      |                        |                           |
|--|-------------------|-------------------|------------------|----------------------|-----------------------------------|-----------------------------------|----------------------|------------------------|---------------------------|
|  | Pitch inner plate | Pitch outer plate | Transverse Pitch | Attachment hole size | Width over Attachment outer plate | Width over Attachment inner plate | Attachment Thickness | Attachment Face height | Pitch of attachment holes |
| Lbf  | MIN               | MIN               |                  |                      |                                   |                                   |                      |                        |                           |
| Conveyor chain -BS F2 attachments (welded) |                   |                   |                  |                      |                                   |                                   |                      |                        |                           |
|  |                   |                   | I                | J                    | K(MAX)                            | L(MAX)                            | M                    | N                      | O                         |
| 3000                                       | 50.8              | 38.1              | 44.              | 7.4                  | 72.0                              | 68.0                              | 3.0                  | 44.5                   | 25.4                      |
| 6000/7500                                  | 69.9              | 57.2              | 76.2             | 9.2                  | 116.0                             | 106.0                             | 4.0                  | 56.0                   | 31.8                      |
| 12000/15000                                | 101.6             | 82.6              | 88.9             | 10.5                 | 133.0                             | 122.0                             | 5.0                  | 84.0                   | 57.2                      |
| 24000/30000                                | 139.7             | 114.3             | 108.0            | 12.2                 | 159.0                             | 146.0                             | 6.0                  | 108.0                  | 69.9                      |
| 36000/45000                                | 165.1             | 133.4             | 146.0            | 13.7                 | 200.0                             | 202.0                             | 8.0                  | 152.0                  | 88.9                      |
| 60000                                      | 165.1             | 133.4             | 146.0            | 13.7                 | 200.0                             | 202.0                             | 8.0                  | 152.0                  | 88.9                      |
| 90000                                      | 190.5             | 152.4             | 171.5            | 19.7                 | 252.0                             | 229.0                             | 10.0                 | 152.0                  | 88.9                      |

## BS ATTACHMENT HOLES IN LINK PLATES



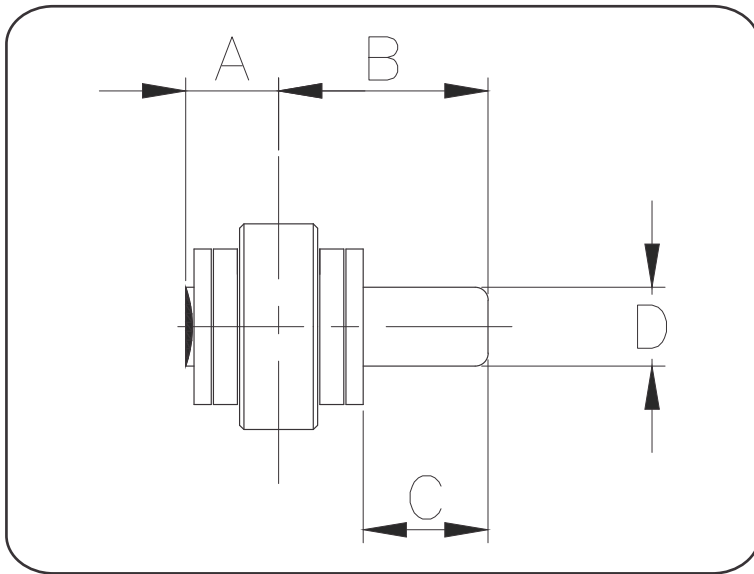
| Technical Details (mm) |                  |                    |                    |               |                  |                       |               |               |
|------------------------|------------------|--------------------|--------------------|---------------|------------------|-----------------------|---------------|---------------|
| Breaking Load          | Pitch Bush chain | Pitch small roller | Pitch large roller | Hole diameter | Pitch            | Attachment hole pitch | Hole diameter | Cone diameter |
| Lbf                    | MIN              | MIN                | MIN                | MIN           |                  |                       |               |               |
| <b>One hole</b>        |                  |                    |                    |               | <b>Two holes</b> |                       |               |               |
| 3000                   | 50.8             | 50.8               | 76.2               | 6.65          | -                | -                     | -             | -             |
| 6000                   | -                | 95.3               | -                  | 9.9           | 95.6             | 38.1                  | 8.3           | 14.7          |
| 7500                   | -                | 95.3               | -                  | 9.9           | 127.0            | 63.5                  | 8.3           | 14.7          |
| 12000/15000            | -                | -                  | 133.5              | 13.1          | 101.6            | 25.4                  | 9.9           | 17.8          |
|                        |                  |                    |                    |               | 108.0            | 34.9                  | 9.9           | 17.8          |
|                        |                  |                    |                    |               | 139.7            | 60.3                  | 9.9           | 17.8          |
|                        |                  |                    |                    |               | 177.8            | 101.6                 | 9.9           | 17.8          |
| 24000/30000            | -                | -                  | 190.5              | 19.4          | 127.0            | 34.9                  | 9.9           | 17.8          |
|                        |                  |                    |                    |               | 152.4            | 60.3                  | 9.9           | 17.8          |
|                        |                  |                    |                    |               | 171.5            | 82.6                  | 9.9           | 17.8          |
|                        |                  |                    |                    |               | 190.5            | 101.6                 | 9.9           | 17.8          |
|                        |                  |                    |                    |               | 228.6            | 139.7                 | 9.9           | 17.8          |
| 36000/45000            | 241.3            | 241.3              | 317.5              | 22.6          | 152.4            | 44.5                  | 11.5          | 20.8          |
|                        |                  |                    |                    |               | 190.5            | 82.6                  | 11.5          | 20.8          |
|                        |                  |                    |                    |               | 228.6            | 114.3                 | 11.5          | 20.8          |
|                        |                  |                    |                    |               | 304.8            | 190.5                 | 11.5          | 20.8          |
| 60000                  | 241.3            | 241.3              | 317.5              | 22.6          | 152.4            | 44.5                  | 11.5          | 20.8          |
|                        |                  |                    |                    |               | 190.5            | 82.6                  | 11.5          | 20.8          |
|                        |                  |                    |                    |               | 228.6            | 114.3                 | 11.5          | 20.8          |
|                        |                  |                    |                    |               | 304.8            | 190.5                 | 11.5          | 20.8          |
| 90000                  | 279.4            | 279.4              | 330.2              | 29            | 177.8            | 50.8                  | 16.7          | 30.5          |
|                        |                  |                    |                    |               | 228.6            | 108                   | 16.7          | 30.5          |
|                        |                  |                    |                    |               | 304.8            | 184.2                 | 16.7          | 30.5          |

## BS L ATTACHMENTS (INTEGRAL)



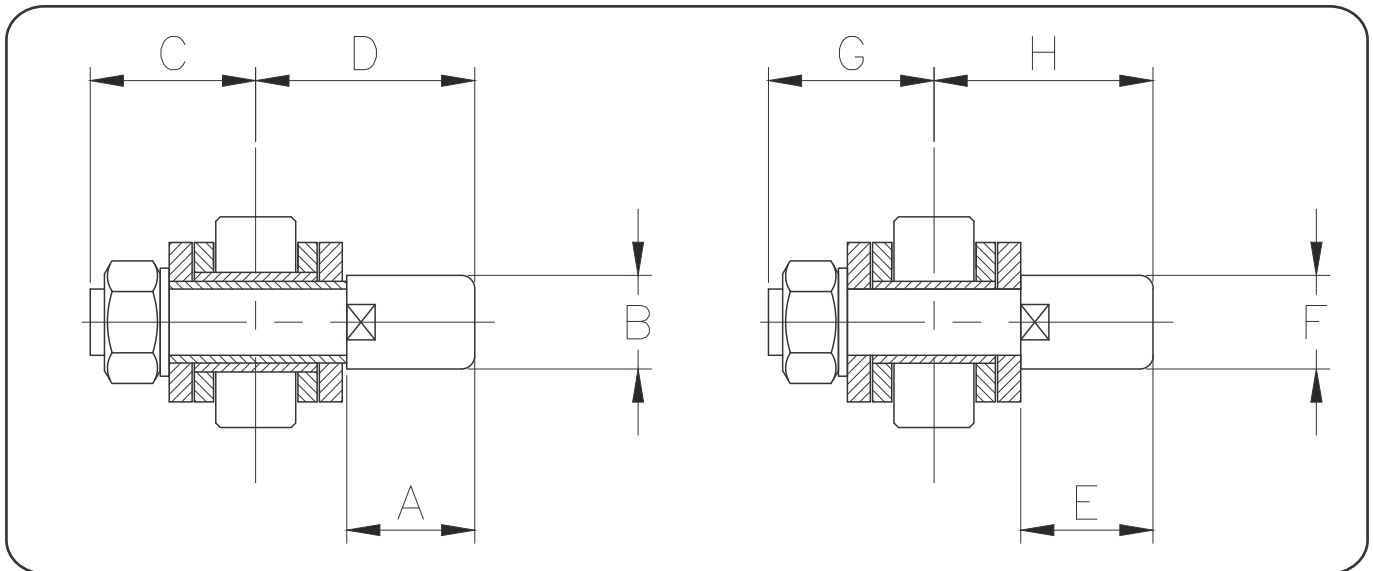
| Technical Details (mm)                      |      |                  |                           |                        |                             |                          |                            |                      |  |
|---|------|------------------|---------------------------|------------------------|-----------------------------|--------------------------|----------------------------|----------------------|--|
| Breaking Load                               | Type | Transverse Pitch | Pitch of Attachment holes | Attachment Face length | Width over Attachment outer | Attachment hole diameter | Total height of attachment | Attachment Thickness | Distance of pitch point to Attachment Face |
| Lbf   |      |                  |                           |                        |                             |                          |                            |                      |  |
| Conveyor chain -BS L attachments (integral) |      |                  |                           |                        |                             |                          |                            |                      |  |
|   |      | A                | B                         | C                      | D                           | E                        | F                          | G                    | H  |
| 3000  | L0   | -                | -                         | 28.7                   | 74.2                        | -                        | 18.0                       | 1.8                  | 16.0                                       |
|   | L0   | -                | -                         | 41.4                   | 99.6                        | -                        | 18.0                       | 1.8                  | 16.0                                       |
|   | L0   | -                | -                         | 54.1                   | 125.0                       | -                        | 18.0                       | 1.8                  | 16.0                                       |
|   | L0   | -                | -                         | 66.8                   | 150.4                       | -                        | 18.0                       | 1.8                  | 16.0                                       |
|   | L1   | 41.4             | -                         | 25.4                   | 67.6                        | 7.4                      | 18.0                       | 1.8                  | 16.0                                       |
|   | L2   | 41.4             | 19.0                      | 41.4                   | 100.0                       | 7.4                      | 18.0                       | 1.8                  | 16.0                                       |
| 6000/7500                                   | L0   | -                | -                         | 48.3                   | 123.5                       | -                        | 25.4                       | 3.8                  | 19.0                                       |
|   | L0   | -                | -                         | 61.0                   | 148.90                      | -                        | 25.4                       | 3.8                  | 19.0                                       |
|   | L0   | -                | -                         | 86.4                   | 199.7                       | -                        | 25.4                       | 3.8                  | 19.0                                       |
|   | L0   | -                | -                         | 111.8                  | 250.5                       | -                        | 25.4                       | 3.8                  | 19.0                                       |
|   | L0   | -                | -                         | 137.2                  | 301.3                       | -                        | 25.4                       | 3.8                  | 19.0                                       |
|   | L2   | 58.9             | -                         | 31.8                   | 107.0                       | 9.2                      | 25.4                       | 3.8                  | 19.0                                       |
| 12000/15000                                 | L2   | 58.9             | 21.6                      | 48.3                   | 123.0                       | 9.2                      | 25.4                       | 3.8                  | 19.0                                       |
|   | L0   | -                | -                         | 44.5                   | 122.0                       | -                        | 38.1                       | 3.8                  | 25.4                                       |
|   | L0   | -                | -                         | 57.2                   | 147.4                       | -                        | 38.1                       | 3.8                  | 25.4                                       |
|   | L0   | -                | -                         | 82.6                   | 198.2                       | -                        | 38.1                       | 3.8                  | 25.4                                       |
|   | L0   | -                | -                         | 108.0                  | 249.0                       | -                        | 38.1                       | 3.8                  | 25.4                                       |
|   | L0   | -                | -                         | 133.4                  | 299.8                       | -                        | 38.1                       | 3.8                  | 25.4                                       |
| 24000/30000                                 | L1   | 73.4             | -                         | 36.8                   | 106.8                       | 10.5                     | 38.1                       | 3.8                  | 25.4                                       |
|   | L2   | 73.4             | 24                        | 57.2                   | 148.6                       | 10.5                     | 38.1                       | 3.8                  | 25.4                                       |
|   | L0   | -                | -                         | 128.5                  | 300.0                       | -                        | 51.0                       | 5.1                  | 35.0                                       |
| 36000/45000                                 | L0   | -                | -                         | 135.2                  | 330.0                       | -                        | 61.0                       | 7.6                  | 42.0                                       |
| 60000                                       | L0   | -                | -                         | 135.2                  | 330.0                       | -                        | 61.0                       | 7.6                  | 42.0                                       |

## BS EXTENDED BEARING PINS



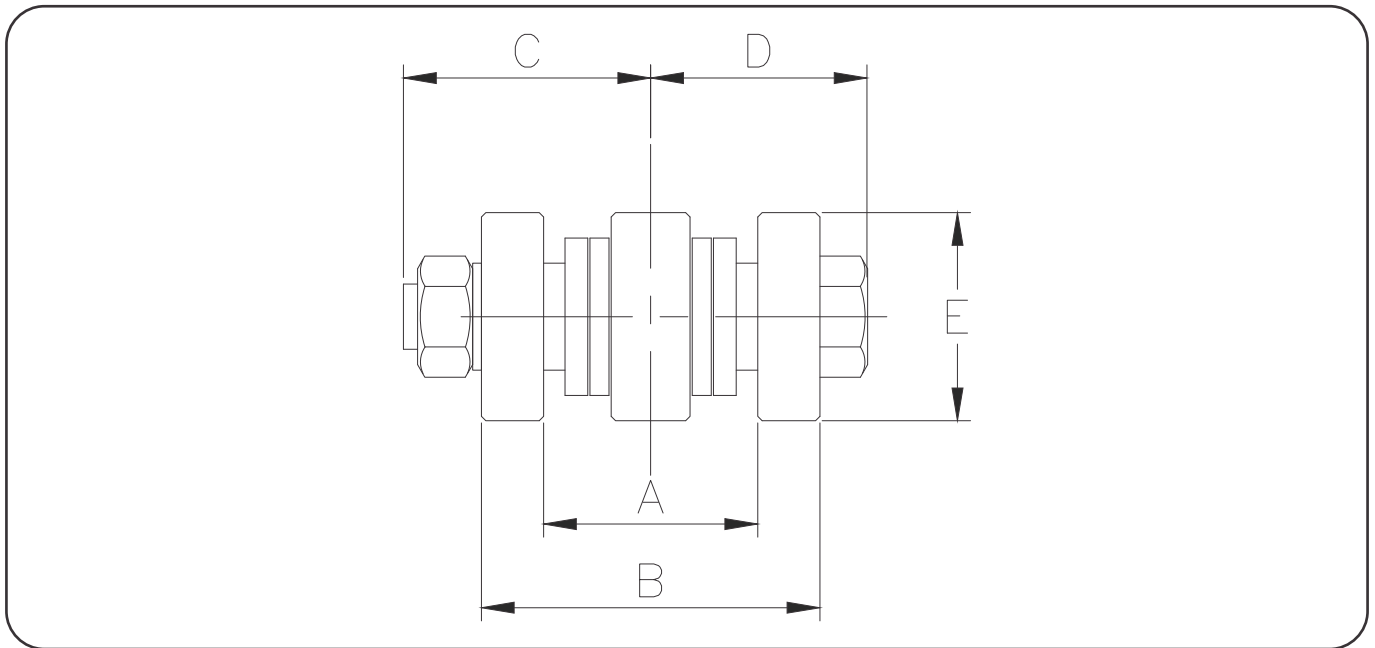
| Technical Details (mm)          |                              |                            |                  |                    |
|---------------------------------|------------------------------|----------------------------|------------------|--------------------|
| Breaking Load                   | Centre Distance to rivet End | Centre Distance to Pin End | Extension length | Extension diameter |
| Lbf                             | MIN                          | MIN                        |                  |                    |
| <b>BS Extended bearing pins</b> |                              |                            |                  |                    |
|                                 | A                            | B                          | C                | D                  |
| 3000                            | 11.0                         | 35.0                       | 25.4             | 11.0               |
| 7500                            | 19.0                         | 55.0                       | 38.0             | 16.0               |
| 15000                           | 23.0                         | 65.0                       | 44.5             | 22.2               |
| 30000                           | 30.0                         | 84.0                       | 57.2             | 28.6               |
| 45000                           | 41.2                         | 107.2                      | 70.0             | 35.0               |
| 60000                           | 40.0                         | 107.2                      | 70.0             | 35.0               |
| 90000                           | 47.0                         | 113.3                      | 70.0             | 38.0               |

## BS SPIGOT PINS



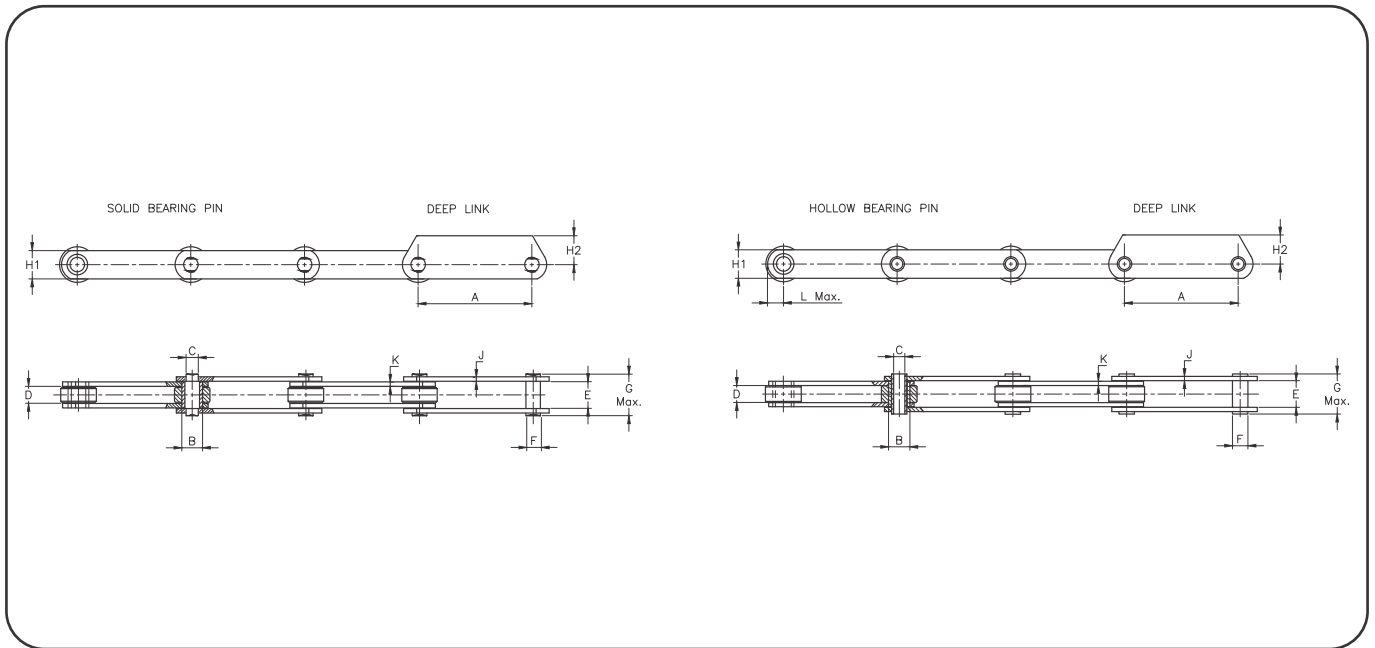
| Technical Details (mm)                       |                 |                    |                            |                            |   |                    |                            |                            |
|--|-----------------|--------------------|----------------------------|----------------------------|---|--------------------|----------------------------|----------------------------|
| Breaking Load                                | Extended Length | Extension Diameter | Centre Distance to nut End | Centre Distance to pin End | Extended Length                                   | Extension Diameter | Centre Distance to nut End | Centre Distance to pin End |
| Lbf  |                 |                    |                            |                            |   |                    |                            |                            |
| <b>Spigot pins through hollow pin type 1</b> |                 |                    |                            |                            | <b>Spigot pins mid pitch on outer link type 2</b> |                    |                            |                            |
|  | A               | B                  | C                          | D                          | E   | F                  | G                          | H                          |
| 300  | -               | -                  | -                          | -                          | 25.4  | 11.0               | 17                         | 35.0                       |
| 600  | 38.1            | 16                 | 31                         | 57                         | 38.1  | 16.0               | 29.2                       | 56.0                       |
| 7500   | -               | -                  | -                          | -                          | 38.1  | 16.0               | 29.2                       | 56.0                       |
| 12000  | 44.5            | 19                 | 36.3                       | 66.3                       | 44.5  | 19.0               | 34.3                       | 64.8                       |
| 15000  | -               | -                  | -                          | -                          | 44.5  | 19.0               | 34.3                       | 64.8                       |
| 24000  | 57.2            | 28.6               | 48                         | 85.3                       | 57.2  | 28.6               | 45.7                       | 83.8                       |
| 30000  | -               | -                  | -                          | -                          | 57.2  | 28.6               | 45.7                       | 83.8                       |
| 36000  | 70              | 31.8               | 61                         | 109                        | 70.0  | 31.8               | 58.5                       | 107.0                      |
| 45000  | -               | -                  | -                          | -                          | 70.0  | 31.8               | 58.5                       | 107.0                      |
| 60000  | -               | -                  | -                          | -                          | 70.0  | 31.8               | 58.5                       | 107.0                      |
| 90000  | -               | -                  | -                          | -                          | 70.0  | 38.0               | 71                         | 113.0                      |

## BS OUTBOARD ROLLERS



| Technical Details (mm)     |                                   |                                |                             |                              |                 |                             |
|----------------------------|-----------------------------------|--------------------------------|-----------------------------|------------------------------|-----------------|-----------------------------|
| Breaking Load              | Distance Between Outboard Rollers | Distance Over Outboard Rollers | Centre Disatance to Nut End | Centre Disatance to Bolt End | Roller Diameter | Roller Load Per Pitch Point |
| Lbf                        | MIN                               | MIN                            |                             |                              |                 |                             |
| <b>BS Outboard Rollers</b> |                                   |                                |                             |                              |                 |                             |
|                            | A                                 | B                              | C                           | D                            | E               |                             |
| 6000                       | 44.45                             | 75                             | 55.6                        | 46.5                         | 33.3            | 165                         |
| 12000                      | 50.8                              | 88.9                           | 68.5                        | 57                           | 50.8            | 290                         |
| 24000                      | 66                                | 118                            | 86.6                        | 75.7                         | 69.9            | 545                         |
| 38000                      | 94                                | 171.5                          | 113.5                       | 106                          | 92.1            | 725                         |

## ISO STANDARD CHAIN



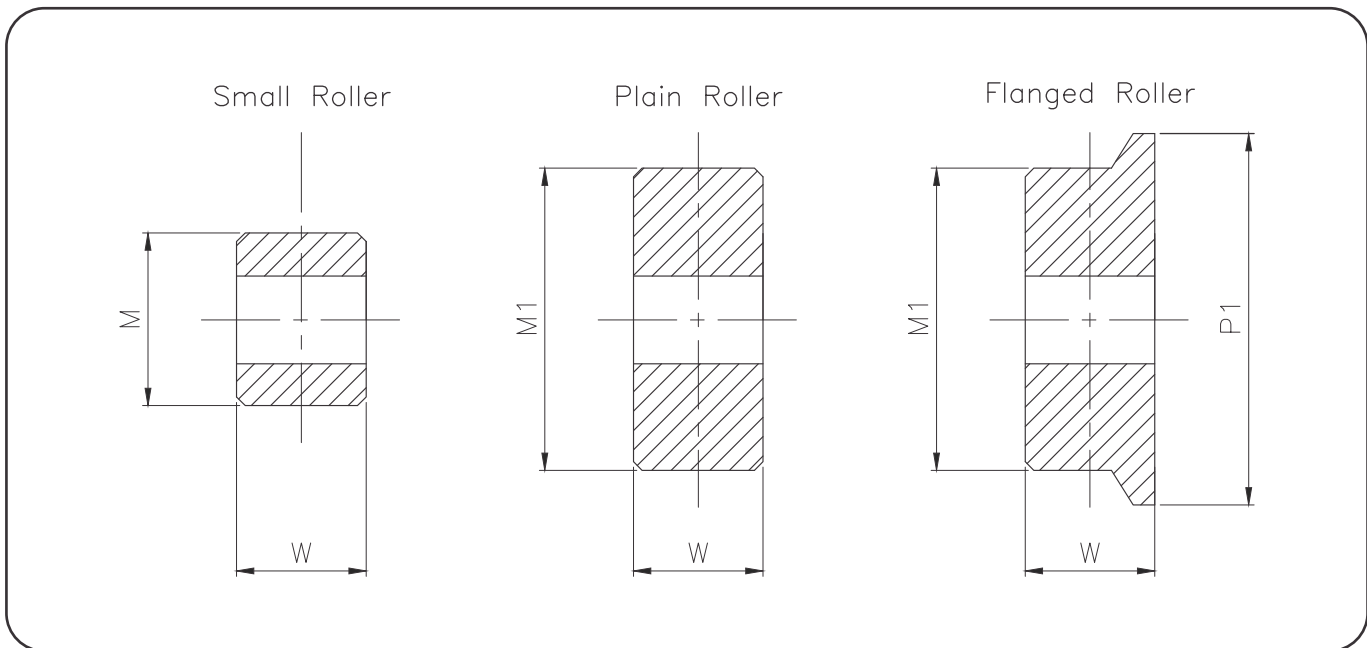
| Technical Details (mm)    |                         |       |       |          |                             |                    |                    |         |            |              |              |                   |                   |
|---------------------------|-------------------------|-------|-------|----------|-----------------------------|--------------------|--------------------|---------|------------|--------------|--------------|-------------------|-------------------|
| Chain No                  | Breaking Load (newtons) | Pitch | Pitch | Bush Dia | Hollow Bearing Pin Bore Dia | Inside Width Inner | Inside Width Outer | Pin Dia | Pin Length | Plate Height | Plate Height | Plate Width Outer | Plate Inner Outer |
|                           | MIN                     | MIN   | MAX   | MAX      | MIN                         | MIN                | MIN                | MAX     | MAX        |              | MAX          |                   |                   |
| <b>Hollow Bearing pin</b> |                         |       |       |          |                             |                    |                    |         |            |              |              |                   |                   |
|                           |                         | A     | A     | B        | C                           | D                  | E                  | F       | G          | H1           | H2           | J                 | K                 |
| MC56                      | 56000                   | 80    | 250   | 21.0     | 10.2                        | 24.0               | 33.7               | 15.5    | 46.5       | 35.0         | 32.5         | 4.0               | 4.0               |
| Mc112                     | 112000                  | 100   | 315   | 29.0     | 14.3                        | 32.0               | 45.7               | 22.0    | 63.0       | 50.0         | 45.0         | 6.0               | 6.0               |
| Mc224                     | 224000                  | 160   | 500   | 41.0     | 20.3                        | 43.0               | 60.8               | 31.0    | 83.0       | 70.0         | 65.0         | 8.0               | 8.0               |

| <b>Solid Bearing Pin</b> |        |     |      |      |   |      |       |      |       |       |       |      |      |
|--------------------------|--------|-----|------|------|---|------|-------|------|-------|-------|-------|------|------|
|                          |        | A   | A    | B    | C | D    | E     | F    | G     | H1    | H2    | J    | K    |
| M40                      | 40000  | 63  | 250  | 12.5 | - | 20.0 | 28.3  | 8.5  | 41.0  | 25.0  | 22.5  | 3.5  | 3.5  |
| M56                      | 56000  | 63  | 250  | 15.0 | - | 24.0 | 33.3  | 10.0 | 47.0  | 30.0  | 30.0  | 4.0  | 4.0  |
| M80                      | 80000  | 80  | 315  | 18.0 | - | 28.0 | 39.4  | 12.0 | 54.6  | 35.0  | 32.5  | 5.0  | 5.0  |
| M112                     | 112000 | 80  | 400  | 21.0 | - | 32.0 | 45.5  | 15.0 | 60.6  | 40.0  | 40.0  | 5.0  | 6.0  |
| M160                     | 160000 | 100 | 500  | 25.0 | - | 37.0 | 52.5  | 18.0 | 72.6  | 50.0  | 45.0  | 6.0  | 7.0  |
| M224                     | 224000 | 125 | 630  | 30.0 | - | 43.0 | 60.6  | 21.0 | 84.0  | 60.0  | 60.0  | 6.0  | 8.0  |
| M315                     | 315000 | 160 | 630  | 36.0 | - | 48.0 | 70.7  | 25.0 | 97.0  | 70.0  | 65.0  | 8.0  | 10.0 |
| M450                     | 450000 | 200 | 800  | 42.0 | - | 56.0 | 82.8  | 30.0 | 114.0 | 80.0  | 80.0  | 10.0 | 12.0 |
| M630                     | 630000 | 250 | 1000 | 50.0 | - | 66.0 | 97.0  | 36.0 | 133.0 | 100.0 | 90.0  | 14.0 | 14.0 |
| M900                     | 900000 | 250 | 1000 | 60.0 | - | 78.0 | 113.0 | 44.0 | 153.0 | 120.0 | 120.0 | 16.0 | 16.0 |



# CONVEYOR CHAIN

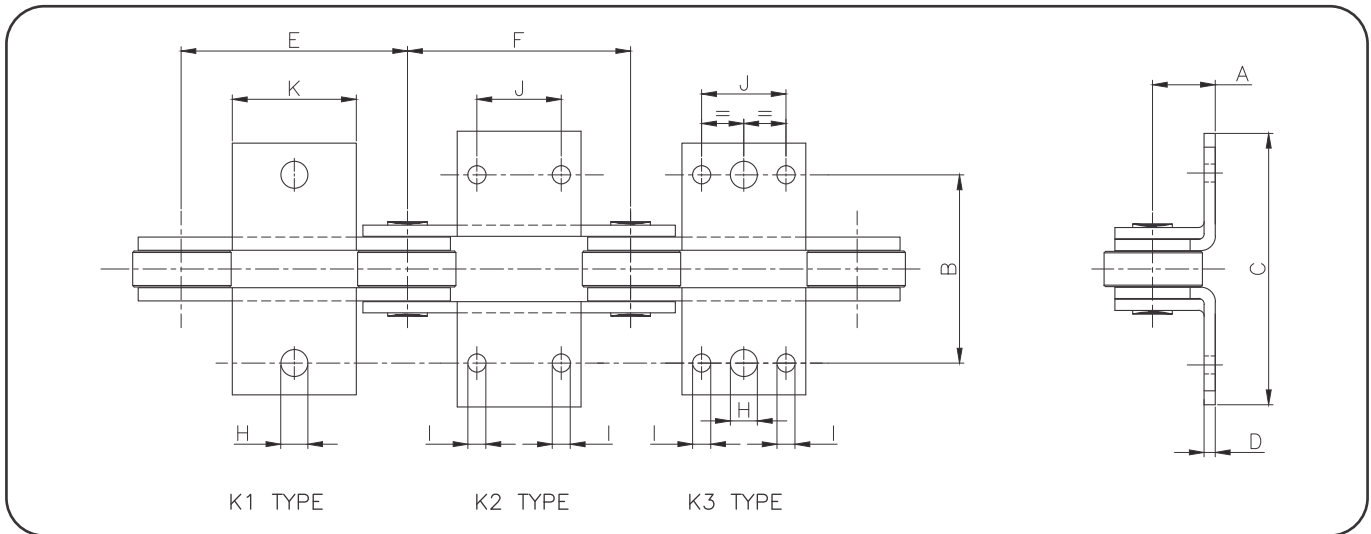
## ISO ROLLERS



| Chain Ref                         | Technical Details (mm)  |                 |              |                 |              |                   |            |              |
|-----------------------------------|-------------------------|-----------------|--------------|-----------------|--------------|-------------------|------------|--------------|
| Chain No                          | Breaking Load (Newtons) | Small Tread Dia | Roller Width | Plain Tread Dia | Roller Width | Flanged Tread Dia | Flange Dia | Roller Width |
| <b>Hollow Bearing Pin Rollers</b> |                         |                 |              |                 |              |                   |            |              |
|                                   |                         | M               | W            | M1              | W            | M1                | P          | W            |
| MC56                              | 56000                   | 30.0            | 23.0         | 50.0            | 23.0         | 50.0              | 60.0       | 23.0         |
| MC112                             | 112000                  | 42.0            | 31.0         | 70.0            | 31.0         | 70.0              | 85.0       | 31.0         |
| Mc224                             | 224000                  | 60.0            | 42.0         | 100.0           | 42.0         | 100.0             | 120.0      | 42.0         |

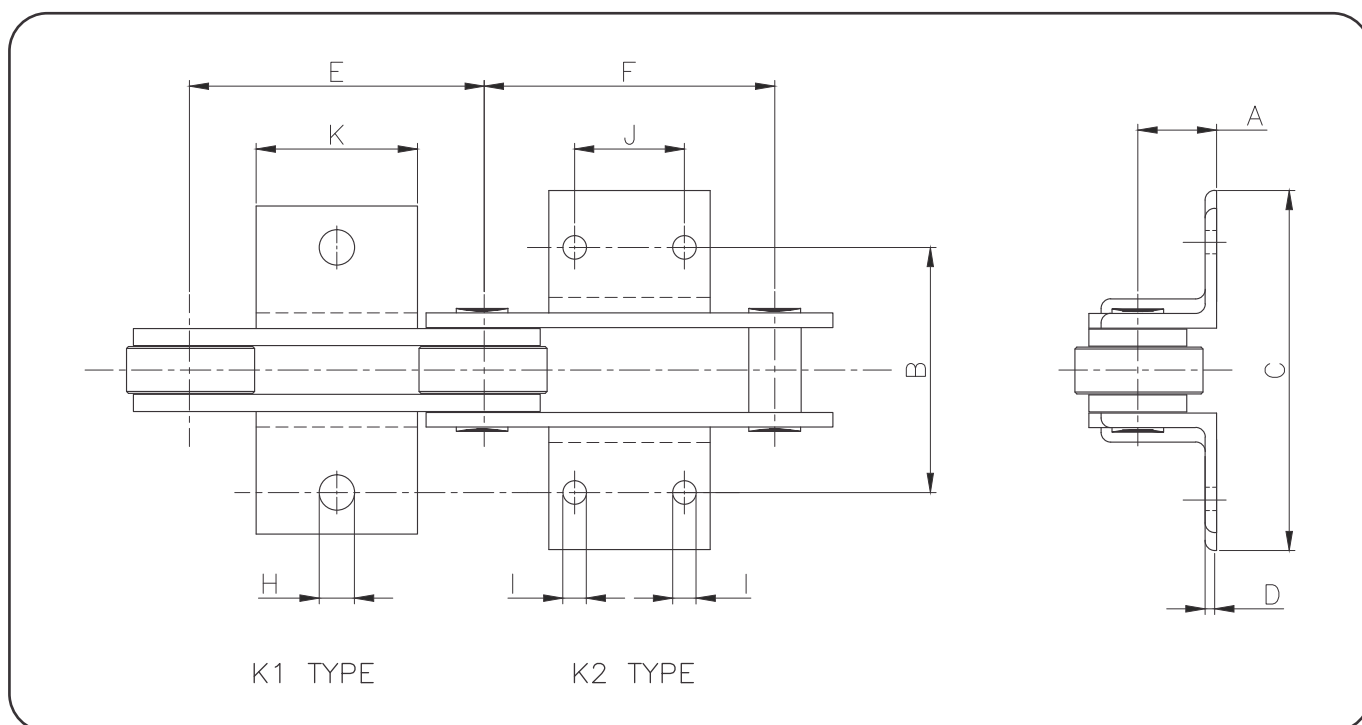
| <b>Solid Bearing Pin Rollers</b> |        |      |      |       |      |       |       |      |
|----------------------------------|--------|------|------|-------|------|-------|-------|------|
|                                  |        | M    | W    | M1    | W    | M1    | P     | W    |
| M40                              | 40000  | 18.0 | 19.0 | 36.0  | 19.0 | 36.0  | 42.0  | 19.0 |
| M56                              | 56000  | 21.0 | 23.0 | 42.0  | 23.0 | 42.0  | 50.0  | 23.0 |
| M80                              | 80000  | 25.0 | 27.0 | 50.0  | 27.0 | 50.0  | 60.0  | 27.0 |
| M112                             | 112000 | 30.0 | 31.0 | 60.0  | 31.0 | 60.0  | 70.0  | 31.0 |
| M160                             | 160000 | 36.0 | 36.0 | 70.0  | 36.0 | 70.0  | 85.0  | 36.0 |
| M224                             | 224000 | 42.0 | 42.0 | 85.0  | 42.0 | 85.0  | 100.0 | 42.0 |
| M315                             | 315000 | 50.0 | 47.0 | 100.0 | 47.0 | 100.0 | 120.0 | 47.0 |
| M450                             | 450000 | 60.0 | 55.0 | 120.0 | 55.0 | 120.0 | 140.0 | 55.0 |
| M630                             | 630000 | 70.0 | 65.0 | 140.0 | 65.0 | 140.0 | 170.0 | 65.0 |
| M900                             | 900000 | 85.0 | 76.0 | 170.0 | 76.0 | 170.0 | 210.0 | 76.0 |

## ISO K ATTACHMENTS (WELDED) SOLID PIN CHAIN



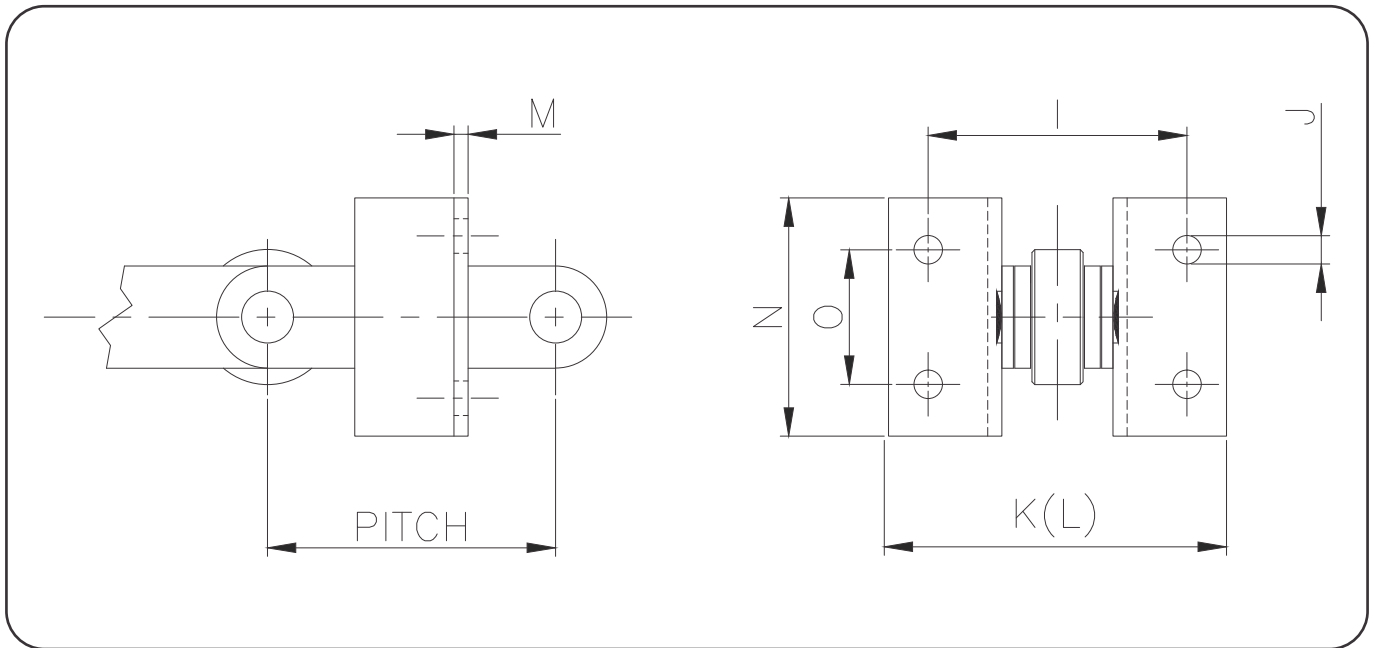
| Chain Ref                |                         | Technical Details (mm) |                  |                                   |                                  |                 |                                |                                |                 |                |            |                 |
|--------------------------|-------------------------|------------------------|------------------|-----------------------------------|----------------------------------|-----------------|--------------------------------|--------------------------------|-----------------|----------------|------------|-----------------|
| Chain No                 | Breaking Load (Newtons) | Platform Height        | Transverse Pitch | Width over Attachment Inner/Outer | Attachment Thickness Inner/Outer | Attachment Type | Attachment Minimum Outer Pitch | Attachment Minimum Inner Pitch | Centre Hole Dia | Outer Hole Dia | Hole Pitch | Platform Length |
|                          |                         |                        |                  | MAX                               |                                  |                 |                                |                                |                 |                |            |                 |
| <b>Solid Bearing Pin</b> |                         |                        |                  |                                   |                                  |                 |                                |                                |                 |                |            |                 |
|                          |                         | A                      | B                | C                                 | D                                |                 | E                              | F                              | H               | I              | J          | K               |
| M40                      | 4000                    | 25                     | 70               | 101/110                           | 3.5                              | K1              | 63                             | 63                             | 9.0             | -              | -          | 20              |
|                          |                         |                        |                  |                                   |                                  | K2              | 80                             | 80                             | -               | 9              | 20         | 40              |
|                          |                         |                        |                  |                                   |                                  | K3              | 100                            | 100                            | 9.0             | 9              | 40         | 60              |
|                          |                         |                        |                  |                                   |                                  | K3              | 125                            | 125                            | 9.0             | 9              | 65         | 85              |
| M56                      | 56000                   | 30                     | 88               | 116/126                           | 5.0                              | K1              | 63.0                           | 63.0                           | 11.0            | -              | -          | 25.0            |
|                          |                         |                        |                  |                                   |                                  | K2              | 100.0                          | 100.0                          | -               | 11.0           | 25.0       | 50.0            |
|                          |                         |                        |                  |                                   |                                  | K3              | 125.0                          | 125.0                          | 11.0            | 11.0           | 50.0       | 75.0            |
|                          |                         |                        |                  |                                   |                                  | K3              | 160.0                          | 160.0                          | 11.0            | 11.0           | 85.0       | 110.0           |
| M80                      | 80000                   | 35                     | 96               | 132/135                           | 5.0                              | K1              | 80.0                           | 80.0                           | 11.0            | -              | -          | 25.0            |
|                          |                         |                        |                  |                                   |                                  | K3              | 125.0                          | 125.0                          | 11.0            | 11.0           | 50.0       | 75.0            |
|                          |                         |                        |                  |                                   |                                  | K3              | 160.0                          | 160.0                          | 11.0            | 11.0           | 85.0       | 110.0           |
|                          |                         |                        |                  |                                   |                                  | K3              | 200.0                          | 200.0                          | 11.0            | 11.0           | 125.0      | 150.0           |
| M112                     | 112000                  | 40                     | 110              | 150/164                           | 6.0                              | K1              | 80.0                           | 80.0                           | 14.0            | -              | -          | 30.0            |
|                          |                         |                        |                  |                                   |                                  | K2              | 125.0                          | 125.0                          | -               | 14.0           | 35.0       | 65.0            |
|                          |                         |                        |                  |                                   |                                  | K3              | 160.0                          | 160.0                          | 14.0            | 14.0           | 65.0       | 95.0            |
|                          |                         |                        |                  |                                   |                                  | K3              | 200.0                          | 200.0                          | 14.0            | 14.0           | 100.0      | 130.0           |
| M160                     | 160000                  | 45                     | 124              | 178/193                           | 6.0                              | K1              | 100.0                          | 100.0                          | 14.0            | -              | -          | 30.0            |
|                          |                         |                        |                  |                                   |                                  | K2              | 160.0                          | 160.0                          | -               | 14.0           | 50.0       | 80.0            |
|                          |                         |                        |                  |                                   |                                  | K3              | 200.0                          | 200.0                          | 14.0            | 14.0           | 85.0       | 115.0           |
|                          |                         |                        |                  |                                   |                                  | K3              | 250.0                          | 250.0                          | 14.0            | 14.0           | 145.0      | 175.0           |
| M224                     | 224000                  | 55                     | 140              | 206/224                           | 8.0                              | K1              | 100.0                          | 125.0                          | 18.0            | -              | -          | 40.0            |
|                          |                         |                        |                  |                                   |                                  | K2              | 160.0                          | 200.0                          | -               | 18.0           | 65.0       | 105.0           |
|                          |                         |                        |                  |                                   |                                  | K3              | 200.0                          | 250.0                          | 18.0            | 18.0           | 125.0      | 165.0           |
|                          |                         |                        |                  |                                   |                                  | K3              | 250.0                          | 315.0                          | 18.0            | 18.0           | 190.0      | 230.0           |
| M315                     | 315000                  | 65                     | 160              | 216/240                           | 10.0                             | K1              | 160.0                          | 160.0                          | 18.0            | -              | -          | 35.0            |
|                          |                         |                        |                  |                                   |                                  | K2              | 200.0                          | 200.0                          | -               | 18.0           | 50.0       | 85.0            |
|                          |                         |                        |                  |                                   |                                  | K2              | 250.0                          | 250.0                          | -               | 18.0           | 100.0      | 135.0           |
|                          |                         |                        |                  |                                   |                                  | K2              | 315.0                          | 315.0                          | -               | 18.0           | 155.0      | 190.0           |
| M450                     | 450000                  | 75                     | 180              | 228/255                           | 10.0                             | K1              | 200.0                          | 200.0                          | 18.0            | -              | -          | 40.0            |
|                          |                         |                        |                  |                                   |                                  | K2              | 250.0                          | 250.0                          | -               | 18.0           | 85.0       | 125.0           |
|                          |                         |                        |                  |                                   |                                  | K2              | 315.0                          | 315.0                          | -               | 18.0           | 155.0      | 195.0           |
|                          |                         |                        |                  |                                   |                                  | K2              | 400.0                          | 400.0                          | -               | 18.0           | 240.0      | 280.0           |
| M630                     | 630000                  | 90                     | 230              | 302/333                           | 12.0                             | K1              | 250.0                          | 250.0                          | 24              | -              | -          | 50.0            |
|                          |                         |                        |                  |                                   |                                  | K2              | 315.0                          | 315.0                          | -               | 24.0           | 100.0      | 150.0           |
|                          |                         |                        |                  |                                   |                                  | K2              | 400.0                          | 400.0                          | -               | 24.0           | 190.0      | 240.0           |
|                          |                         |                        |                  |                                   |                                  | K2              | 500.0                          | 500.0                          | -               | 24.0           | 300.0      | 350.0           |
| M900                     | 900000                  | 110                    | 280              | 358/393                           | 15.0                             | K1              | 250.0                          | 250.0                          | 30              | -              | -          | 60.0            |
|                          |                         |                        |                  |                                   |                                  | K2              | 315.0                          | 315.0                          | -               | 30.0           | 65.0       | 125.0           |
|                          |                         |                        |                  |                                   |                                  | K2              | 400.0                          | 400.0                          | -               | 30.0           | 155.0      | 215.0           |
|                          |                         |                        |                  |                                   |                                  | K2              | 500.0                          | 500.0                          | -               | 30.0           | 240.0      | 300.0           |

## ISO K ATTACHMENTS (WELDED) HOLLOW PIN TYPE CHAIN



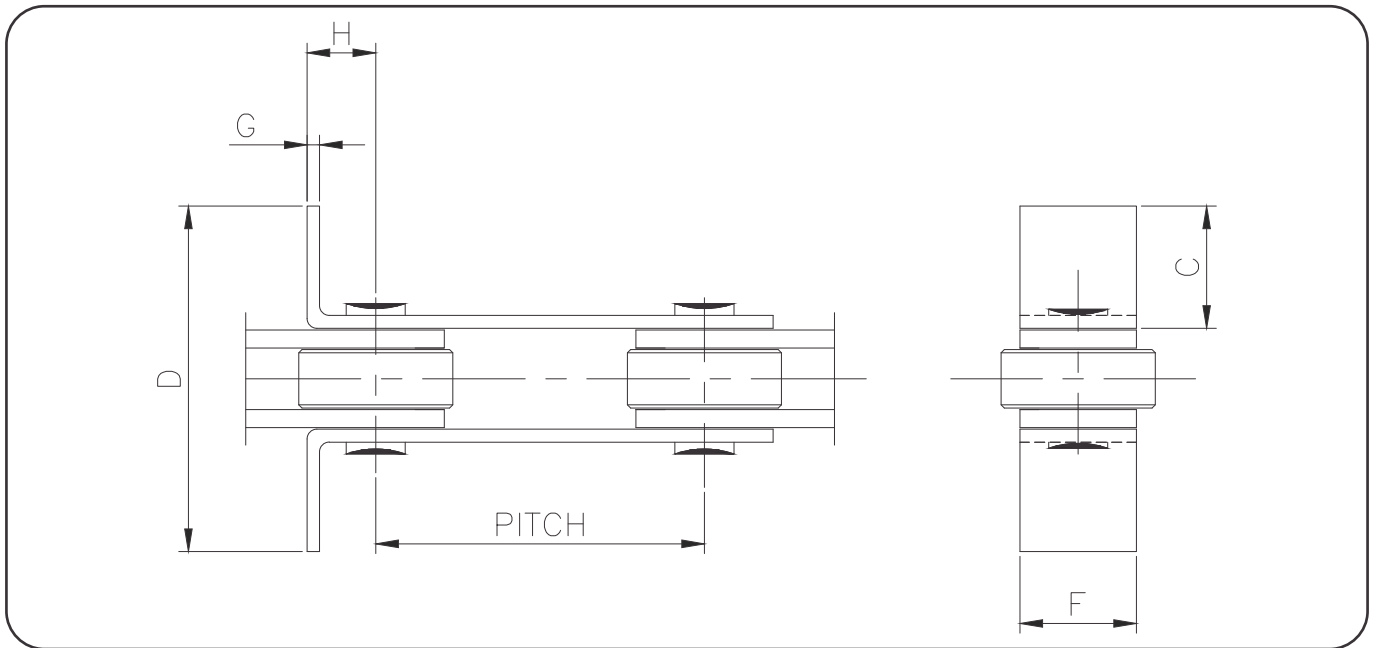
| Chain Ref                 | Technical Details (mm)  |                 |                  |                                   |                                  |                 |                                |                                |                 |            |                 |
|---------------------------|-------------------------|-----------------|------------------|-----------------------------------|----------------------------------|-----------------|--------------------------------|--------------------------------|-----------------|------------|-----------------|
| Chain No                  | Breaking Load (Newtons) | Platform Height | Transverse Pitch | Width over Attachment inner/outer | Attachment Thickness inner/outer | Attachment Type | Attachment Minimum outer Pitch | Attachment Minimum inner Pitch | Centre Hole Dia | Hole Pitch | Platform Length |
|                           |                         |                 |                  | MAX                               |                                  |                 |                                |                                |                 |            |                 |
| <b>Hollow Bearing Pin</b> |                         |                 |                  |                                   |                                  |                 |                                |                                |                 |            |                 |
|                           |                         | A               | B                | C(MAX)                            | D                                |                 | E                              | F                              | I               | J          | K               |
| MC56                      | 56000                   | 35              | 88               | 126/137                           | 5                                | K2              | 125                            | 125                            | 11              | 50         | 75              |
|                           |                         |                 |                  |                                   |                                  | K2              | 160                            | 160                            | 11              | 85         | 110             |
|                           |                         |                 |                  |                                   |                                  | K2              | 200                            | 200                            | 11              | 125        | 150             |
| MC112                     | 112000                  | 45              | 110              | 171/186                           | 6                                | K2              | 160                            | 160                            | 14              | 50         | 80              |
|                           |                         |                 |                  |                                   |                                  | K2              | 200                            | 200                            | 14              | 85         | 115             |
|                           |                         |                 |                  |                                   |                                  | K2              | 250                            | 250                            | 14              | 145        | 175             |
| MC224                     | 224000                  | 65              | 140              | 206/220                           | 8                                | K2              | 200                            | 200                            | 18              | 50         | 85              |
|                           |                         |                 |                  |                                   |                                  | K2              | 250                            | 250                            | 18              | 100        | 135             |
|                           |                         |                 |                  |                                   |                                  | K2              | 315                            | 315                            | 18              | 155        | 190             |

## ISO F ATTACHMENTS (WELDED)



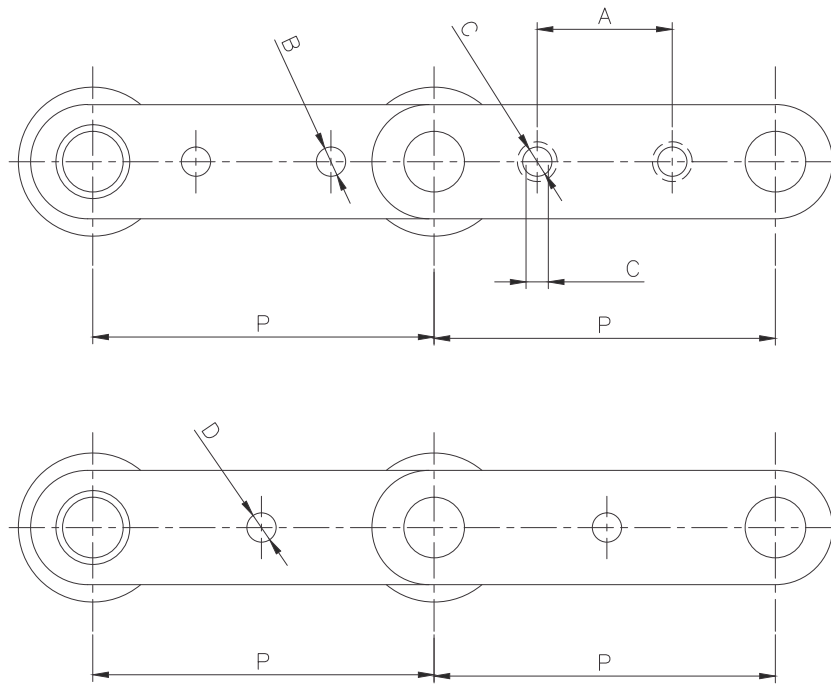
| Chain Ref                  | Technical Details (mm)  |                           |                           |                  |                      |                             |                             |                      |                        |                     |
|----------------------------|-------------------------|---------------------------|---------------------------|------------------|----------------------|-----------------------------|-----------------------------|----------------------|------------------------|---------------------|
| Chain No                   | Breaking Load (Newtons) | Minimum Pitch Inner Plate | Minimum Pitch Outer Plate | Transverse Pitch | Attachment Hole Size | Width Over Att. Outer Plate | Width Over Att. Inner Plate | Attachment Thickness | Attachment Face Height | Pitch of Attachment |
| ISO F Attachments (welded) |                         |                           |                           |                  |                      |                             |                             |                      |                        |                     |
|                            |                         |                           |                           | I                | J                    | K                           | L                           | M                    | N                      | O                   |
| M40                        | 40000                   | 80.0                      | 80.0                      | 70.0             | 9.0                  | 110.0                       | 101.0                       | 3.5                  | 40.0                   | 20.0                |
| M56                        | 56000                   | 100.0                     | 100.0                     | 88.0             | 11.0                 | 126.0                       | 116.0                       | 5.0                  | 50.0                   | 25.0                |
| MC56                       | 56000                   | 100.0                     | 100.0                     | 88.0             | 11.0                 | 137.0                       | 126.0                       | 5.0                  | 75.0                   | 50.0                |
| M80                        | 80000                   | 100.0                     | 100.0                     | 96.0             | 11.0                 | 135.0                       | 132.0                       | 5.0                  | 75.0                   | 50.0                |
| M112                       | 112000                  | 125.0                     | 125.0                     | 110.0            | 14.0                 | 164.0                       | 150.0                       | 6.0                  | 65.0                   | 35.0                |
| MC112                      | 112000                  | 125.0                     | 125.0                     | 110.0            | 14.0                 | 186.0                       | 171.0                       | 6.0                  | 80.0                   | 50.0                |
| M160                       | 160000                  | 125.0                     | 125.0                     | 124.0            | 14.0                 | 193.0                       | 178.0                       | 6.0                  | 80.0                   | 50.0                |
| M224                       | 224000                  | 160.0                     | 160.0                     | 140.0            | 18.0                 | 224.0                       | 206.0                       | 8.0                  | 105.0                  | 65.0                |
| Mc224                      | 244000                  | 200.0                     | 200.0                     | 140.0            | 18.0                 | 220.0                       | 206.0                       | 8.0                  | 85.0                   | 50.0                |
| M315                       | 315000                  | 200.0                     | 200.0                     | 160.0            | 18.0                 | 240.0                       | 216.0                       | 10.0                 | 85.0                   | 50.0                |
| M450                       | 450000                  | 200.0                     | 200.0                     | 180.0            | 18.0                 | 255.0                       | 228.0                       | 10.0                 | 125.0                  | 85.0                |
| M630                       | 630000                  | 250.0                     | 250.0                     | 230.0            | 24.0                 | 333.0                       | 302.0                       | 12.0                 | 150.0                  | 100.0               |
| M900                       | 900000                  | 315.0                     | 315.0                     | 280.0            | 30.0                 | 393.0                       | 358.0                       | 15.0                 | 125.0                  | 65.0                |

## ISO L ATTACHMENTS



| Chain Ref                           | Technical Details (mm)         |      |                        |                             |                            |                      |  |
|-------------------------------------|--------------------------------|------|------------------------|-----------------------------|----------------------------|----------------------|--|
| Chain No                            | Breaking Load (Newtons)<br>Lbf | Type | Attachment Face Length | Width Over Attachment Outer | Total height of Attachment | Attachment Thickness | Distance of Pitch point to Attachment face |
| <b>ISO L Attachments (Integral)</b> |                                |      |                        |                             |                            |                      |  |
|                                     |                                |      | C                      | D                           | F                          | G                    | H  |
| M40                                 | 40000                          | L0   | 75.85                  | 180.0                       | 25.0                       | 3.5                  | 30.0                                       |
| M56                                 | 56000                          | L0   | 98.35                  | 230.0                       | 30.0                       | 4.0                  | 30.0                                       |
| M80                                 | 80000                          | L0   | 95.30                  | 230.0                       | 35.0                       | 5.0                  | 30.0                                       |
| M112                                | 11200                          | L0   | 104.75                 | 255.0                       | 40.0                       | 6.0                  | 30.0                                       |
| M160                                | 160000                         | L0   | 113.75                 | 280.0                       | 50.0                       | 7.0                  | 35.0                                       |
| M224                                | 224000                         | L0   | 134.70                 | 330.0                       | 60.0                       | 8.0                  | 40.0                                       |
| M315                                | 315000                         | L0   | 154.65                 | 380.0                       | 70.0                       | 10.0                 | 50.0                                       |
| M450                                | 450000                         | L0   | 173.60                 | 430.0                       | 80.0                       | 12.0                 | 60.0                                       |
| M630                                | 630000                         | L0   | 168.50                 | 430.0                       | 100.0                      | 14.0                 | 70.0                                       |

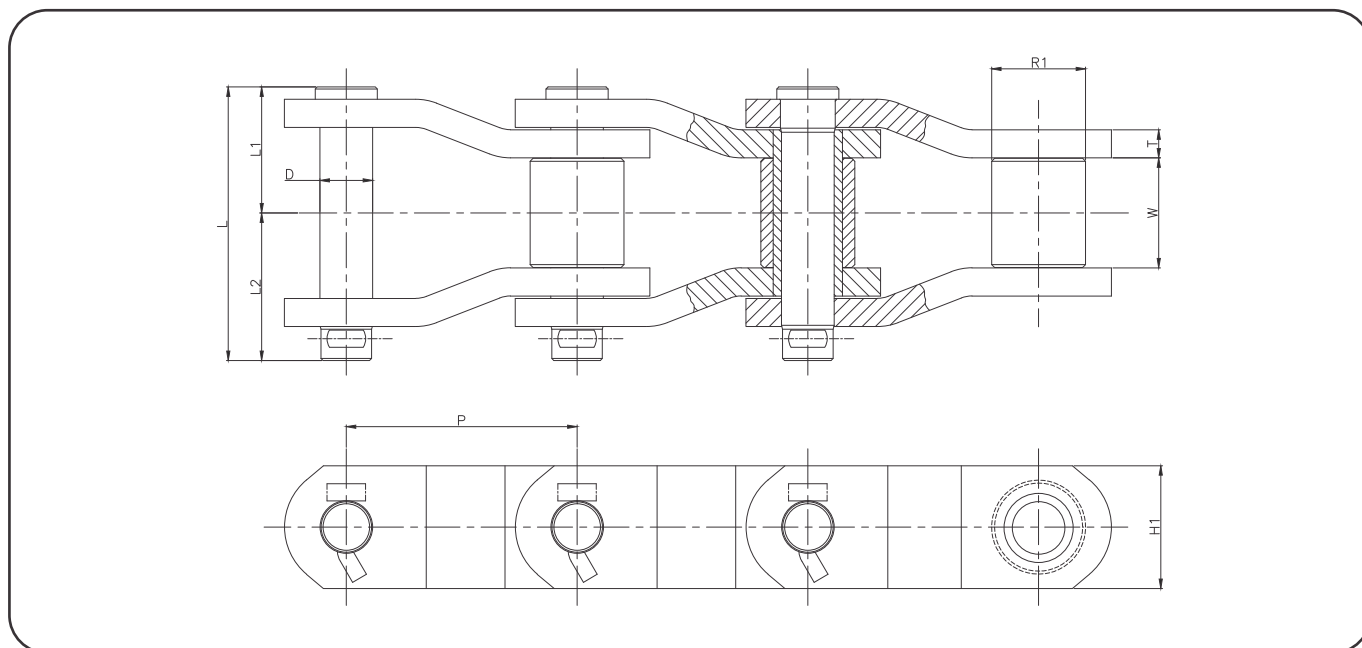
## ISO ATTACHMENT HOLES IN LINK PLATES



| Chain Ref | Technical Details (mm) |                  |                     |
|-----------|------------------------|------------------|---------------------|
| Chain No  | Breaking Load          | Pitch Bush Chain | Pitch Hole Diameter |
|           |                        | MIN              |                     |
| One hole  |                        |                  |                     |
|           |                        | P                | D                   |
| M40       | 40000                  | 100.0            | 11.0                |
| M56       | 56000                  | 100.0            | 11.0                |
| MC56      | 56000                  | 100.0            | 11.0                |
| M80       | 80000                  | 100.0            | 15.0                |
| M112      | 112000                 | 125.0            | 15.0                |
| MC112     | 112000                 | 125.0            | 15.0                |
| M160      | 160000                 | 160.0            | 21.0                |
| M224      | 224000                 | 160.0            | 21.0                |
| MC224     | 224000                 | 160.0            | 21.0                |
| M315      | 315000                 | 200.0            | 25.0                |
| M450      | 450000                 | 200.0            | 30.0                |
| M630      | 630000                 | 250.0            | 36.0                |
| M900      | 900000                 | 315.0            | 45.0                |

| Technical Details (mm) |                 |               |
|------------------------|-----------------|---------------|
| Pitch                  | Attachment Hole | Hole Diameter |
| MIN                    |                 |               |
| Two holes              |                 |               |
| P                      | A               | B             |
| 160.0                  | 63.0            | 9.0           |
| 160.0                  | 63.0            | 11.0          |
| 160.0                  | 80.0            | 11.0          |
| 200.0                  | 80.0            | 11.0          |
| 200.0                  | 80.0            | 14.0          |
| 200.0                  | 100.0           | 14.0          |
| 250.0                  | 100.0           | 14.0          |
| 250.0                  | 100.0           | 18.0          |
| 315.0                  | 125.0           | 18.0          |
| 315.0                  | 125.0           | 18.0          |
| 315.0                  | 125.0           | 18.0          |
| 400.0                  | 160.0           | 24.0          |
| 500.0                  | 200.0           | 30.0          |

## HEAVY DUTY OFFSET SIDE BAR CHAINS



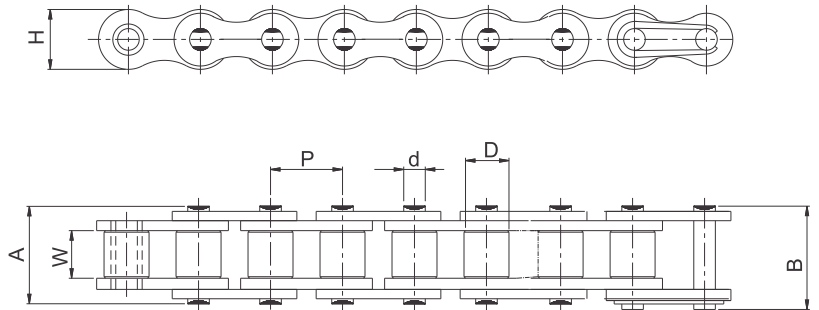
| Chain No. | Pitch P | Roller Dia R1 | WIP W | Plate Height H1 | Plate Thickness T | Average Breaking Load KGF | Minimum Breaking Load KGF | Pin Diameter D1 | Pin Length L | L1    | L2    |
|-----------|---------|---------------|-------|-----------------|-------------------|---------------------------|---------------------------|-----------------|--------------|-------|-------|
| DO 3140   | 44.45   | 25.40         | 25.40 | 43.20           | 5.6               | 24000                     | 20400                     | 12.15           | 62.6         | 28.55 | 34.05 |
| DO 3160   | 50.80   | 28.58         | 31.75 | 49.20           | 6.4               | 30600                     | 26010                     | 13.73           | 72.3         | 33.40 | 38.90 |
| DO 1613AK | 50.80   | 28.58         | 31.50 | 42.90           | 8.1               | 31750                     | 26987.5                   | 15.06           | 78.0         | 36.20 | 41.80 |
| DO 3180   | 57.15   | 35.72         | 36.40 | 54.00           | 7.2               | 36300                     | 30855                     | 17.46           | 81.0         | 37.30 | 43.70 |
| DO 25H    | 63.50   | 31.75         | 38.10 | 41.50           | 9.5               | 39700                     | 33745                     | 15.88           | 92.5         | 43.05 | 49.45 |
| DO 1625   | 63.50   | 39.69         | 38.90 | 60.30           | 8.0               | 43000                     | 36550                     | 19.80           | 89.7         | 41.40 | 48.30 |
| DO 588    | 66.27   | 22.23         | 28.60 | 28.60           | 6.4               | 14700                     | 12495                     | 11.11           | 67.0         | 32.00 | 35.00 |
| DO 568    | 77.90   | 41.28         | 40.10 | 54.00           | 9.5               | 52400                     | 44540                     | 19.05           | 97.0         | 45.05 | 51.95 |
| DO 568-T  | 77.90   | 41.28         | 40.10 | 54.00           | 9.5               | 50000                     | 42500                     | 19.05           | 97.0         | 45.05 | 51.95 |
| DO 3      | 78.11   | 31.75         | 38.10 | 38.00           | 8.0               | 27700                     | 23545                     | 15.88           | 86.5         | 40.05 | 46.45 |
| DO 3H     | 78.11   | 31.75         | 38.10 | 41.50           | 9.5               | 39700                     | 33745                     | 15.88           | 92.5         | 43.05 | 49.45 |
| DO 3125   | 79.38   | 41.28         | 41.20 | 54.00           | 9.5               | 52000                     | 44200                     | 20.32           | 99.5         | 45.90 | 53.60 |
| DO 1616   | 88.90   | 44.45         | 38.60 | 54.00           | 12.7              | 63500                     | 53975                     | 22.23           | 111.7        | 51.60 | 60.10 |
| DO 3924T  | 99.21   | 57.15         | 38.40 | 82.60           | 14.3              | 118000                    | 100300                    | 30.16           | 121.0        | 56.85 | 64.15 |
| DO 5      | 103.20  | 44.45         | 38.60 | 54.00           | 12.7              | 63500                     | 53975                     | 22.23           | 111.7        | 51.60 | 60.10 |
| DO 4      | 103.20  | 44.45         | 49.10 | 54.00           | 12.7              | 63500                     | 53975                     | 22.23           | 122.2        | 56.85 | 65.35 |
| DO 4HF    | 103.20  | 44.45         | 49.20 | 59.00           | 16.0              | 80300                     | 68255                     | 22.23           | 135.7        | 63.60 | 72.10 |
| DO 4HF-T  | 103.20  | 44.45         | 49.20 | 59.00           | 16.0              | 69000                     | 58650                     | 22.23           | 135.7        | 63.60 | 72.10 |
| DO 1245   | 103.45  | 45.24         | 49.20 | 60.00           | 14.5              | 84600                     | 71910                     | 23.80           | 130.0        | 60.25 | 69.75 |
| DO 1245T  | 103.45  | 45.24         | 49.20 | 60.00           | 14.5              | 77000                     | 65450                     | 23.80           | 130.0        | 60.25 | 69.75 |
| DO 1343   | 103.89  | 47.63         | 49.20 | 70.00           | 14.5              | 105000                    | 89250                     | 25.40           | 132.0        | 62.25 | 69.75 |
| DO 1343T  | 103.89  | 47.63         | 49.20 | 70.00           | 14.5              | 86500                     | 73525                     | 25.40           | 132.0        | 62.25 | 69.75 |
| DO 1345   | 103.89  | 50.80         | 49.20 | 70.00           | 14.5              | 105000                    | 89250                     | 25.40           | 132.0        | 62.25 | 69.75 |
| DO 1345T  | 103.89  | 50.80         | 49.20 | 70.00           | 14.5              | 86500                     | 73525                     | 25.40           | 132.0        | 62.25 | 69.75 |
| DO 0635   | 114.30  | 57.15         | 52.40 | 76.00           | 14.5              | 113000                    | 96050                     | 27.90           | 135.5        | 64.25 | 71.25 |
| DO 1634A  | 127.00  | 63.50         | 58.70 | 76.00           | 14.5              | 109000                    | 92650                     | 28.63           | 141.5        | 67.40 | 74.10 |
| DO 1602AA | 127.00  | 63.50         | 70.00 | 90.00           | 16.0              | 156000                    | 132600                    | 31.75           | 161.2        | 77.05 | 84.15 |
| DO 6042   | 152.40  | 76.20         | 76.30 | 101.60          | 19.0              | 207000                    | 175950                    | 38.10           | 184.0        | 86.70 | 97.30 |



ISO 606/BS 228/DIN 8187

## STANDARD ROLLER CHAINS

### EUROPEAN SERIES

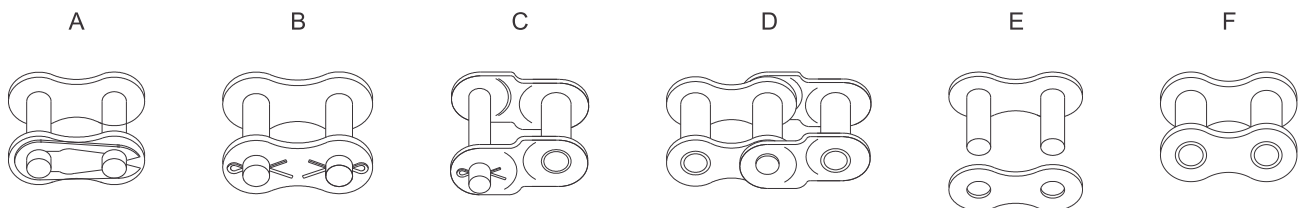


The European series of roller chains are designed for use in mechanical power transmission systems.

### SINGLE STRAND

| Intl. Ref No. | ROMBO Chain No. | Pitch (P) | Width between Inner Plates (W) (Min) | Roller Dia (D) (Max) | Bearing Pin Dia (D) (Max) | Plate Height (H) (Max) | Width over Bearing Pin (A) (Max) | Width over Joint Fasteners (B) Max | Projected bearing Area Sq.cm | Avg. Weight Per Meter (Kg) | Tensile Strength (KN) (Min) | Tensile Strength (KN) (Avg) | Spares Availability |
|---------------|-----------------|-----------|--------------------------------------|----------------------|---------------------------|------------------------|----------------------------------|------------------------------------|------------------------------|----------------------------|-----------------------------|-----------------------------|---------------------|
| 04B-1         | D04B 01         | 6.00      | 2.80                                 | 4.00                 | 1.85                      | 5.00                   | 7.40                             | 10.30                              | 0.08                         | 0.12                       | 3.00                        | 3.33                        | A,B,C,D             |
| 05B-1         | D05B 01         | 8.00      | 3.00                                 | 5.00                 | 2.31                      | 7.10                   | 8.60                             | 11.70                              | 0.11                         | 0.18                       | 5.00                        | 5.90                        | A,B,C,D             |
| 06B-1*        | D061 01         | 9.525     | 5.72                                 | 6.35                 | 3.28                      | 8.20                   | 13.50                            | 16.80                              | 0.28                         | 0.40                       | 9.00                        | 10.70                       | A,B,C,D             |
| 08B-1         | D083 01         | 12.70     | 7.75                                 | 8.51                 | 4.45                      | 11.80                  | 17.00                            | 20.90                              | 0.50                         | 0.68                       | 18.00                       | 21.10                       | A,B,C,D             |
| 10B-1         | D101 01         | 15.875    | 9.65                                 | 10.16                | 5.08                      | 14.70                  | 19.60                            | 23.70                              | 0.67                         | 0.91                       | 22.40                       | 27.45                       | A,B,C,D             |
| 12B-1         | D102 01         | 19.05     | 11.68                                | 12.07                | 5.72                      | 16.10                  | 22.70                            | 27.30                              | 0.88                         | 1.12                       | 29.00                       | 32.35                       | A,B,C,D             |
| 16B-1         | D160 01         | 25.40     | 17.02                                | 15.88                | 8.27                      | 21.00                  | 36.10                            | 41.50                              | 2.07                         | 2.59                       | 60.00                       | 70.60                       | A,B,C,D             |
| 20B-1         | D200 01         | 31.75     | 19.56                                | 19.05                | 10.19                     | 26.40                  | 43.20                            | 49.30                              | 2.91                         | 3.60                       | 95.00                       | 109.85                      | A,B,C,D             |
| 24B-1         | D240 01         | 38.10     | 25.40                                | 25.40                | 14.63                     | 33.40                  | 53.40                            | 60.00                              | 5.49                         | 6.85                       | 160.00                      | 179.00                      | B,C,D               |
| 28B-1         | D280 01         | 44.45     | 30.99                                | 27.94                | 15.90                     | 37.00                  | 65.10                            | 72.50                              | 7.26                         | 8.56                       | 200.00                      | 226.00                      | B,C,D               |
| 32B-1         | D320 01         | 50.80     | 30.99                                | 29.21                | 17.81                     | 42.20                  | 67.40                            | 75.30                              | 8.05                         | 9.49                       | 250.00                      | 272.80                      | B,C,D               |
| 40B-1         | D400 01         | 63.50     | 38.10                                | 39.37                | 22.89                     | 52.90                  | 82.60                            | 92.60                              | 12.61                        | 15.53                      | 355.00                      | 390.50                      | B,C,D               |
| 48B-1         | D480 01         | 76.20     | 45.72                                | 48.26                | 29.24                     | 63.80                  | 99.10                            | 109.10                             | 20.40                        | 24.45                      | 560.00                      | 602.00                      | B,C,D               |

\* Straight Side Plates

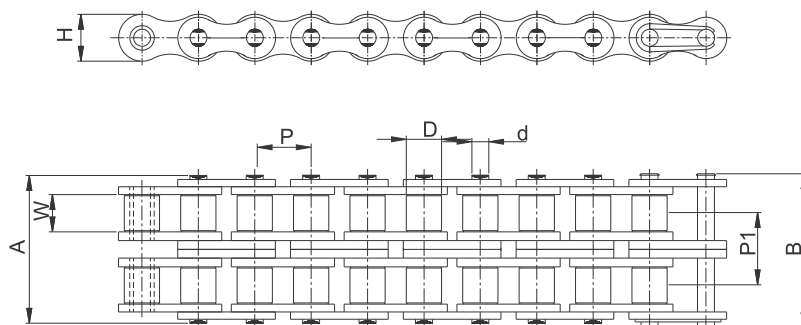


Note : Spares E & F are available for all models



## STANDARD ROLLER CHAINS

### EUROPEAN SERIES



ISO 606/BS 228/DIN 8187

DOUBLE STRAND

| Intl. Ref. No. | ROMBO Chain No. | Pitch (P) | Width between Inner Plates (W) (Min) | Roller Dia (D) (Max) | Bearing Pin Dia (d) (Max) | Plate Height (H) (Max) | Width Over Bearing Pin (A) (Max) | Width Over Joint Fasteners (B) (Max) | Transverse Pitch (P1) | Projected Bearing Area (Sq.cm) | Avg. Weight Per Metre (Kg) | Tensile Strength (KN) (Min) | Tensile Strength (KN) (Avg.) | Spares Availability |
|----------------|-----------------|-----------|--------------------------------------|----------------------|---------------------------|------------------------|----------------------------------|--------------------------------------|-----------------------|--------------------------------|----------------------------|-----------------------------|------------------------------|---------------------|
| 05B-2          | D05B 02         | 8.00      | 3.00                                 | 5.00                 | 2.31                      | 7.10                   | 14.30                            | 17.40                                | 5.64                  | 0.22                           | 0.32                       | 7.80                        | 8.55                         | A,B,C,D             |
| 06B-2*         | D061 02         | 9.525     | 5.72                                 | 6.35                 | 3.28                      | 8.20                   | 23.80                            | 27.10                                | 10.24                 | 0.56                           | 0.76                       | 16.90                       | 19.25                        | A,B,C,D             |
| 08B-2          | D083 02         | 12.70     | 7.75                                 | 8.51                 | 4.45                      | 11.80                  | 31.00                            | 34.90                                | 13.92                 | 1.00                           | 1.31                       | 32.00                       | 38.05                        | A,B,C,D             |
| 10B-2          | D101 02         | 15.875    | 9.65                                 | 10.16                | 5.08                      | 14.70                  | 36.20                            | 40.30                                | 16.59                 | 1.34                           | 1.79                       | 44.50                       | 57.30                        | A,B,C,D             |
| 12B-2          | D120 02         | 19.05     | 11.68                                | 12.07                | 5.72                      | 16.10                  | 42.20                            | 46.80                                | 19.46                 | 1.76                           | 2.22                       | 57.80                       | 65.70                        | A,B,C,D             |
| 16B-2          | D160 02         | 25.40     | 17.02                                | 15.88                | 8.27                      | 21.00                  | 68.00                            | 73.40                                | 31.88                 | 4.14                           | 5.03                       | 106.00                      | 137.55                       | A,B,C,D             |
| 20B-2          | D200 02         | 31.75     | 19.56                                | 19.05                | 10.19                     | 26.40                  | 79.00                            | 85.10                                | 36.45                 | 5.82                           | 7.33                       | 170.00                      | 210.00                       | A,B,C,D             |
| 24B-2          | D240 02         | 38.10     | 25.40                                | 25.40                | 14.63                     | 33.40                  | 101.00                           | 107.60                               | 48.36                 | 10.98                          | 13.50                      | 280.00                      | 322.50                       | B,C,D               |
| 28B-2          | D280 02         | 44.45     | 30.99                                | 27.94                | 15.90                     | 37.00                  | 124.00                           | 131.40                               | 59.56                 | 14.52                          | 16.96                      | 360.00                      | 412.60                       | B,C,D               |
| 32B-2          | D320 02         | 50.80     | 30.99                                | 29.21                | 17.81                     | 42.20                  | 126.00                           | 133.90                               | 58.55                 | 16.10                          | 18.74                      | 450.00                      | 510.80                       | B,C,D               |
| 40B-2          | D400 02         | 63.50     | 38.10                                | 39.37                | 22.89                     | 52.90                  | 154.00                           | 164.00                               | 72.29                 | 25.23                          | 30.72                      | 630.00                      | 708.10                       | B,C,D               |
| 48B-2          | D480 02         | 76.20     | 45.72                                | 48.26                | 29.24                     | 63.80                  | 190.00                           | 200.00                               | 91.21                 | 40.81                          | 48.54                      | 1000.00                     | 1100.00                      | B,C,D               |

\* Straight Side Plates

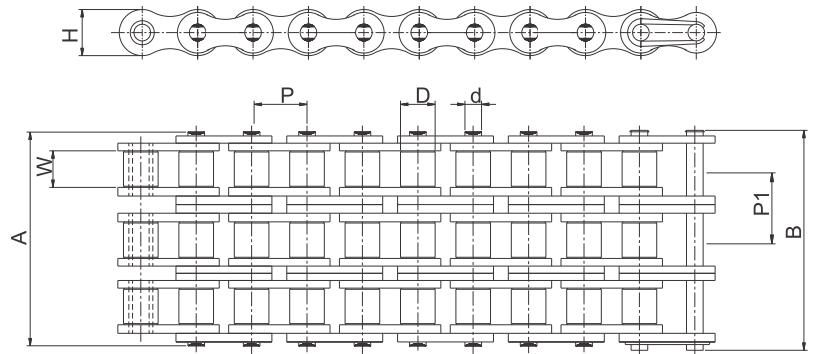
Note : Spares E & F are available for all models



ISO 606/BS 228/DIN 8187

## STANDARD ROLLER CHAINS

### EUROPEAN SERIES



### TRIPLE STRAND

| Intl. Ref No. | ROMBO Chain No. | Pitch (P) | Width between Inner Plates (W) (Min) | Roller Dia (D) (Max) | Bearing Pin Dia (D) (Max) | Plate Height (H) (Max) | Width over Bearing Pin (A) (Max) | Width over Joint Fasteners (B) Max | Transverse Pitch (P1) | Projected bearing Area Sq.cm | Avg. Weight Per Meter (Kg) | Tensile Strength (KN) (Min) | Tensile Strength (KN) (Avg) | Spares Availability |
|---------------|-----------------|-----------|--------------------------------------|----------------------|---------------------------|------------------------|----------------------------------|------------------------------------|-----------------------|------------------------------|----------------------------|-----------------------------|-----------------------------|---------------------|
| 05B-3         | D05B 03         | 8.00      | 3.00                                 | 5.00                 | 2.31                      | 7.10                   | 19.90                            | 23.00                              | 5.64                  | 0.33                         | 0.50                       | 11.10                       | 12.20                       | A,B,C,D             |
| 06B-3*        | D061 03         | 9.525     | 5.72                                 | 6.35                 | 3.28                      | 8.20                   | 34.00                            | 37.30                              | 10.24                 | 0.84                         | 1.12                       | 24.90                       | 27.70                       | A,B,C,D             |
| 08B-3*        | D083 03         | 12.70     | 7.75                                 | 8.51                 | 4.45                      | 11.80                  | 44.90                            | 48.80                              | 13.92                 | 1.50                         | 1.94                       | 47.50                       | 56.00                       | A,B,C,D             |
| 10B-3         | D101 03         | 15.875    | 9.65                                 | 10.16                | 5.08                      | 14.70                  | 52.80                            | 56.90                              | 16.59                 | 2.01                         | 2.68                       | 66.70                       | 83.35                       | A,B,C,D             |
| 12B-3         | D120 03         | 19.05     | 11.68                                | 12.07                | 5.72                      | 16.10                  | 61.70                            | 66.30                              | 19.46                 | 2.64                         | 3.32                       | 86.70                       | 101.55                      | A,B,C,D             |
| 16B-3         | D160 03         | 25.40     | 17.02                                | 15.88                | 8.27                      | 21.00                  | 99.90                            | 105.30                             | 31.88                 | 6.21                         | 7.65                       | 160.00                      | 202.80                      | A,B,C,D             |
| 20B-3         | D200 03         | 31.75     | 19.56                                | 19.05                | 10.19                     | 26.40                  | 116.00                           | 122.10                             | 36.45                 | 8.73                         | 10.96                      | 250.00                      | 306.55                      | A,B,C,D             |
| 24B-3         | D240 03         | 38.10     | 25.40                                | 25.40                | 14.63                     | 33.40                  | 150.00                           | 156.60                             | 48.36                 | 16.47                        | 20.20                      | 425.00                      | 490.60                      | B,C,D               |
| 28B-3         | D280 03         | 44.45     | 30.99                                | 27.94                | 15.90                     | 37.00                  | 184.00                           | 191.40                             | 59.56                 | 21.78                        | 25.38                      | 530.00                      | 625.95                      | B,C,D               |
| 32B-3         | D320 03         | 50.80     | 30.99                                | 29.21                | 17.81                     | 42.20                  | 184.00                           | 191.90                             | 58.55                 | 24.15                        | 28.04                      | 670.00                      | 775.00                      | B,C,D               |
| 40B-3         | D400 03         | 63.50     | 38.10                                | 39.37                | 22.89                     | 52.90                  | 227.00                           | 237.00                             | 72.29                 | 37.85                        | 45.97                      | 950.00                      | 1088.90                     | B,C,D               |
| 40B-3         | D480 03         | 76.20     | 45.72                                | 48.26                | 29.24                     | 63.80                  | 281.00                           | 291.00                             | 91.21                 | 61.22                        | 72.67                      | 1500.00                     | 1648.10                     | B,C,D               |

\* Straight Side Plates

Note : Spares E & F are available for all models

# CERTIFICATE

Management system as per  
**ISO 14001 : 2004**

In accordance with TÜV NORD CERT procedures, it is hereby certified that

**TIDC INDIA**  
(UNIT OF TUBE INVESTMENT OF INDIA LIMITED)  
Survey No. 264, 268/1, 268/2A, 268/2B, 269/1 & 2,  
CTH Road, Ambattur, Chennai- 600 053,  
Tamilnadu, India



applies a management system in line with the above standard for the following scope

**Manufacture of Automotive, Industrial, Agricultural & Cam Chains, Engineering Class Chain, Fine Blanking components & Accessories**

Certificate Registration No. 44 104 114274 -E3  
Audit Report No. 2.5-1490/1999

Valid until 17.07.2014

Certification Body  
at TÜV NORD CERT GmbH

Mumbai, 18.07.2011

This certification was conducted in accordance with the TÜV NORD CERT auditing and certification procedures and is subject to regular surveillance audits.  
TÜV NORD CERT GmbH Langemarkstrasse 20 45141Essen [www.tuv-nord-cert.com](http://www.tuv-nord-cert.com)



TGA-2M07-06-00

# CERTIFICATE

Management system as per  
**BS OHSAS 18001 : 2007**

In accordance with TÜV NORD CERT procedures, it is hereby certified that

**TIDC INDIA**  
(UNIT OF TUBE INVESTMENT OF INDIA LIMITED)  
Survey No. 264, 268/1, 268/2A, 268/2B, 269/1 & 2,  
CTH Road, Ambattur, Chennai-600 053, Tamilnadu,  
India



with the location  
TIDC INDIA, Andhra Pradesh, India  
TIDC INDIA, Uttarakhand, India

applies a management system in line with the above standard for the following scope

**Manufacture of Automotive, Industrial, Agricultural & Cam Chains, Engineering Class Chain, Fine Blanking components & Accessories**

Certificate Registration No. 44 116 111314  
Audit Report No. 3508 2944

Valid until 2014.07.06

Certification Body  
at TÜV NORD CERT GmbH

Essen, 2011.07.07

This certification was conducted in accordance with the TÜV NORD CERT auditing and certification procedures and is subject to regular surveillance audits.

TÜV NORD CERT GmbH Langemarkstrasse 20 45141Essen [www.tuv-nord-cert.com](http://www.tuv-nord-cert.com)



TGA-2M07-06-04

# CERTIFICATE

Management system as per  
**DIN EN ISO 9001 : 2008**

In accordance with TÜV NORD CERT procedures, it is hereby certified that

**TIDC INDIA**  
Plot No. 11, Ambattur,  
Chennai - 600 053,  
India



and other locations as per Annexure 1

applies a management system in line with the above standard for the following scope

**Design, Manufacture and Supply of Standard Roller Chains, Bush Chains, Leaf Chains, Special Chains, Sprockets, Road Chains, Agricultural Chains, Conveyor Chains, Engineering Class Chains, Sprockets and Accessories, Manufacture and supply of Fine Blanking Parts (Components and Sub-Assemblies)**

Certificate Registration No. 44 116 111314

Valid until 2014.07.06

Certification Body  
at TÜV NORD CERT GmbH

Essen, 2011.07.07

This certification was conducted in accordance with the TÜV NORD CERT auditing and certification procedures and is subject to regular surveillance audits.

TÜV NORD CERT GmbH Langemarkstrasse 20 45141Essen [www.tuv-nord-cert.com](http://www.tuv-nord-cert.com)



TGA-2M07-06-04

- ♦ All dimensions indicated are in mm.
- ♦ All information contained in this catalogue is subject to change after publication.
- ♦ While all reasonable care has been taken in compiling the information contained in this catalogue, no responsibility is accepted for printing errors.



# TIDC INDIA

## Unit of Tube Investments of India Ltd.

### FACTORY / MARKETING HEAD OFFICE :

Post Bag No.11, Ambattur, Chennai - 600 053.  
Tel. : 044 - 4223 5508 / 509 Fax : 044 - 4223 5556  
Email : industrialchains@tii.murugappa.com  
[www.tidcindia.in](http://www.tidcindia.in)

### NORTH

#### TIDC INDIA

2nd Floor, Jeevan Deep Building,  
10, Parliament Street,  
New Delhi - 110 001.  
Tel. : 011 - 4150 2244

### SOUTH

#### TIDC INDIA

Post Bag No. 11, Ambattur,  
Chennai - 600 053.  
Tel. : 044 - 4223 5500

### EAST

#### TIDC INDIA

Chabbildas Towers, 2nd Floor,  
6A, MiddleTon Street,  
Kolkatta - 700 071.  
Tel. : 033 - 2281 0289

### WEST

#### TIDC INDIA

302-A, M.P.J. Chambers,  
Wakadewadi, Opp. to Centuri TVS,  
Pune - 411 003.  
Tel. : 020 - 2581 3170